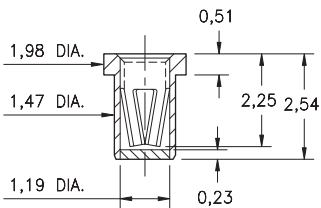


PIN RECEPTACLES

PIN RECEPTACLES WITH ORGANIC FIBRE PLUG® SOLDER BARRIER (SEE SPECIFIC CONTACT RANGE ON PAGES 254 - 262)

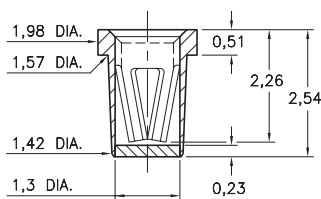
0337

0337-0-XX-XX-15-XX-10-0
Solder mount in $\varnothing 1,68 \pm 0,08$ PTH
#15 Contact for $\varnothing 0,51 - 0,81$ pins
Also available on 8mm wide carrier tape:
See page 194.20 for Tape & Reel details



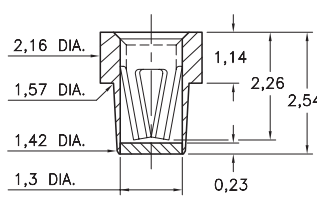
4280

4280-0-XX-XX-16-XX-10-0
Solder mount in $\varnothing 1,7 \pm 0,08$ PTH
#16 Contact for $\varnothing 0,56 - 0,86$ pins
Also available on 8mm wide carrier tape:
See page 194.20 for Tape & Reel details



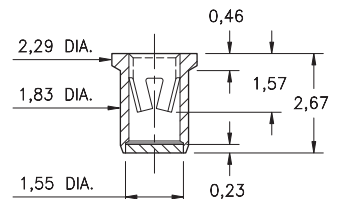
5280

5280-0-XX-XX-16-XX-40-0
Solder mount in $\varnothing 1,7 \pm 0,08$ PTH
#16 Contact for $\varnothing 0,56 - 0,86$ pins
Also available on 16mm wide carrier tape:
See page 194.21 for Tape & Reel details



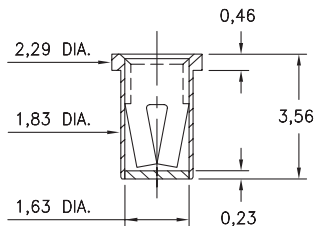
0332

0332-0-XX-XX-18-XX-10-0
Solder mount in $\varnothing 2,01 \pm 0,08$ PTH
#18 Contact for $\varnothing 0,94 - 1,09$ pins
Also available on 16mm wide carrier tape:
See page 194.21 for Tape & Reel details



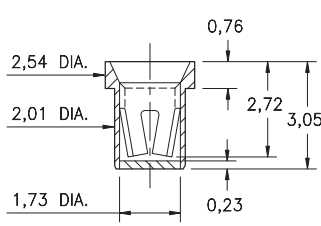
0479

0479-0-XX-XX-34-XX-10-0
Solder mount in $\varnothing 1,96 \pm 0,08$ PTH
#34 Contact for $\varnothing 0,81 - 1,17$ pins
Also available on 16mm wide carrier tape:
See page 194.21 for Tape & Reel details



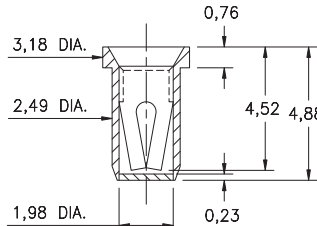
0375

0375-0-XX-XX-02-XX-10-0
Solder mount in $\varnothing 2,21 \pm 0,08$ PTH
#02 Contact for $\varnothing 1,02 - 1,27$ pins
Also available on 12mm wide carrier tape:
See page 194.21 for Tape & Reel details



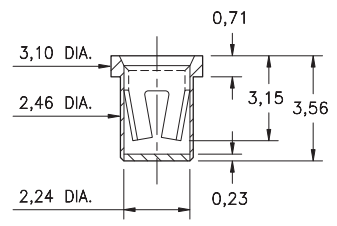
0353

0353-0-XX-XX-03-XX-10-0
Solder mount in $\varnothing 2,69 \pm 0,08$ PTH
#03 Contact for $\varnothing 1,02 - 1,52$ pins
Also available on 12mm wide carrier tape:
See page 194.21 for Tape & Reel details



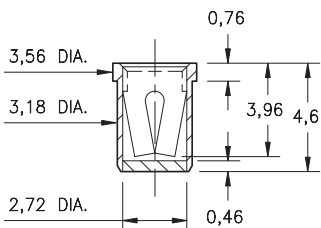
0384

0384-0-XX-XX-23-XX-10-0
Solder mount in $\varnothing 2,67 \pm 0,08$ PTH
#23 Contact for $\varnothing 1,14 - 1,65$ pins
Also available on 12mm wide carrier tape:
See page 194.21 for Tape & Reel details



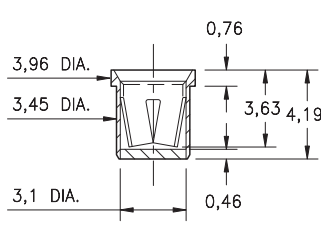
0376

0376-0-XX-XX-07-XX-10-0
Solder mount in $\varnothing 3,38 \pm 0,08$ PTH
#07 Contact for $\varnothing 1,65 - 2,08$ pins
Also available on 16mm wide carrier tape:
See page 194.22 for Tape & Reel details



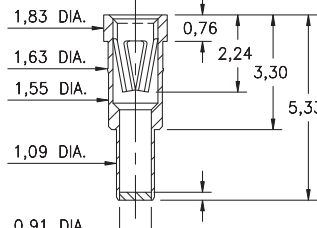
0321

0321-0-XX-XX-08-XX-10-0
Solder mount in $\varnothing 3,66 \pm 0,08$ PTH
#08 Contact for $\varnothing 2,13 - 2,59$ pins
Also available on 16mm wide carrier tape:
See page 194.22 for Tape & Reel details



3435

3435-0-XX-XX-47-XX-04-0
Solder mount in $\varnothing 1,17 \pm 0,08$ PTH
#47 Contact for $\varnothing 0,64 - 0,94$ & $0,64 \square$ pins
Also available on 24mm wide carrier tape:
See page 194.22 for Tape & Reel details



SPECIFICATIONS:

Shell Material: Brass Alloy 360, 1/2 Hard

Contact Material: Beryllium Copper Alloy 172, HT

Solder Barrier: Organic Fibre Plug®

Dimensions: Millimeters

Tolerances On: Lengths: $\pm 0,13$
Diameters: $\pm 0,051$
Angles: $\pm 2^\circ$



ORDER CODE: XXXX - 0 - XX - XX - XX - XX - XX - 0

BASIC PART #

SPECIFY PACKAGING:

- 43 Discrete Receptacles
- 67 Supplied on 330mm Reels

SPECIFY SHELL FINISH:

- 01 5,08µm TIN/LEAD OVER NICKEL

- ◆ 80 5,08µm TIN OVER NICKEL (RoHS)

CONTACT:

- #02, #07, #08, #15, #16, #18, #23, #34 or #47 CONTACT (DATA ON PAGES 254 - 262)

SPECIFY CONTACT FINISH:

- ◆ 27 0,76µm GOLD OVER NICKEL (RoHS)
- 02 2,54µm TIN/LEAD OVER NICKEL
- ◆ 80 5,08µm TIN OVER NICKEL (RoHS)

