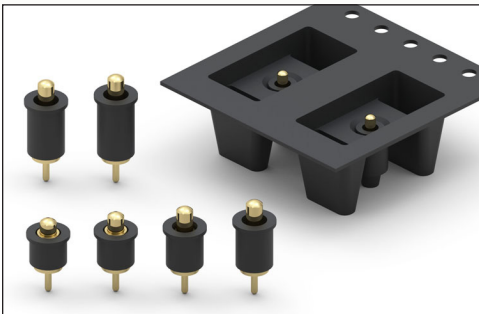


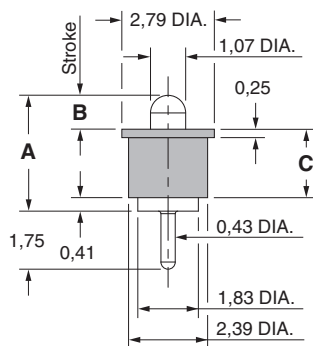
# SPRING-LOADED CONNECTORS

## SERIES 807 • DISCRETE INSULATED SPRING-LOADED PINS • THROUGH-HOLE MOUNT

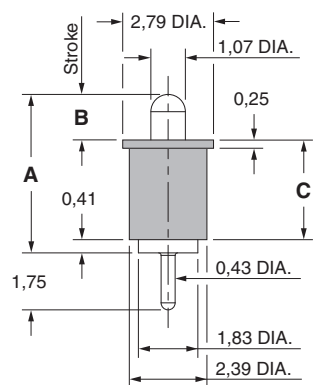


- Discrete insulated spring-loaded pins; available in six heights from 3,48 to 6,0, with rated travel of 0,5 & 0,7
- Precision-machined piston / base and gold-plated components assure up to 1,000,000 cycle life durability
- Low resistance contacts are rated at 2 amps continuous, 3 amps peak
- High temperature thermoplastic insulators are suitable for most SMT soldering processes
- 807 series, contact styles 1 through 6, are available in bulk or on 24mm wide carrier tape for automated pick and place assembly. Tape and Reel packaging per EIA-481. See below for ordering information

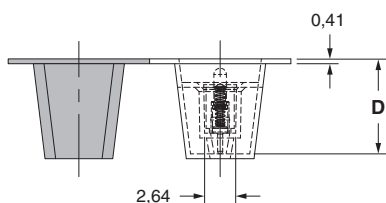
### Series 807 (Contact Style 1 & 2)



### Series 807 (Contact Style 3, 4, 5 & 6)



### Series 807 (Tape Pocket Depth)



## ORDERING INFORMATION

### Series 807 (Bulk Packaged)

807-22-001-10-00X101

Specify contact style 1-6

### Series 807 (Tape & Reel Packaged)

807-22-001-10-00X191

Specify contact style 1-6

Contact Style	Initial Height (A)	Rated Travel	Full Stroke Range (B)	Sleeve Height (C)	Tape Depth (D)	Quantity per Reel
1	3,48	0,5	0,76-1,0	2,08	6,0	880
2	3,94	0,5	0,89-1,0	2,29	6,0	880
3	4,5	0,7	1,14-1,4	2,69	7,07	745
4	5,0	0,7	1,14-1,4	3,2	7,07	745
5	5,51	0,7	1,14-1,4	3,71	8,06	640
6	6,0	0,7	1,14-1,4	4,19	8,06	640

### Technical Specifications

#### Materials:

Contact piston & base: Machined copper alloy plated 0,51µm gold over 2,54µm nickel  
Spring (Contact style 1-6): Beryllium copper-plated 0,25µm gold  
Insulator: High temperature thermoplastic, rated UL94 V-0

#### Mechanical:

Spring force @ initial height (A) (Contact style 1-6): 25 grams  
Spring force @ mid stroke (B/2) (Contact style 1-6): 60 grams  
Durability: Up to 1,000,000 cycles

#### Electrical:

Current rating: 2A (continuous), 3A (peak) per contact  
Contact resistance: 20mΩ max.  
Insulation resistance: 10,000MΩ min.  
Dielectric strength: 700Vrms min.

RoHS-2  
2011/65/EU

