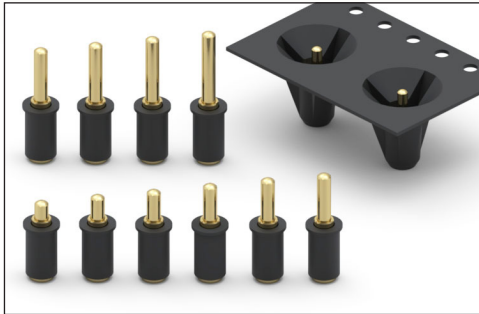


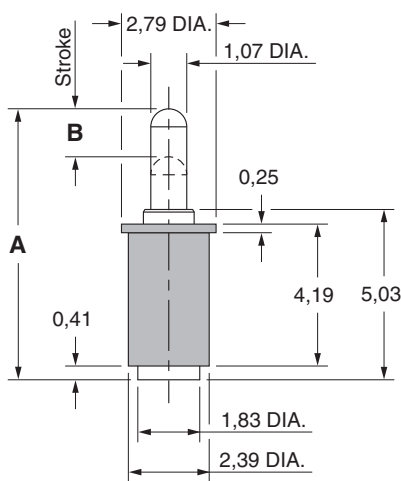
SPRING-LOADED CONNECTORS

SERIES 807 • DISCRETE INSULATED SPRING-LOADED PINS • SURFACE MOUNT

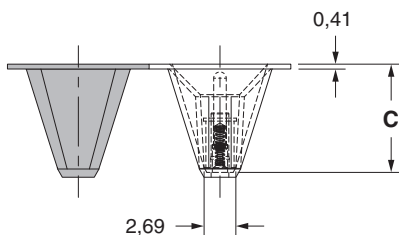


- Discrete insulated spring-loaded pins; available in ten heights from 6,48 to 10,92, with rated travel of 0,7
- Precision-machined piston / base and gold-plated components assure up to 1,000,000 cycle life durability
- Low resistance contacts are rated at 2 amps continuous, 3 amps peak
- High temperature thermoplastic insulators are suitable for most SMT soldering processes
- 807 series, contact styles 0 through 9, are available in bulk or on 16mm wide carrier tape for automated pick and place assembly. Tape and Reel packaging per EIA-481. See below for ordering information

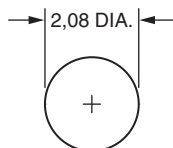
Series 807 (Contact Style 0-9)



Series 807 (Tape Pocket Depth)



Series 807 (Suggested footprint layout)



ORDERING INFORMATION

Series 807 (Bulk Packaged)

807-22-001-30-01X101

Specify contact style 0-9

Series 807 (Tape & Reel Packaged)

807-22-001-30-01X191

Specify contact style 0-9

| Contact Style | Initial Height (A) | Rated Travel | Full Stroke Range (B) | Tape Depth (C) | Quantity per Reel |
|---------------|--------------------|--------------|-----------------------|----------------|-------------------|
| 0 | 6,48 | 0,7 | 1,14-1,4 | 7,24 | 750 |
| 1 | 6,99 | 0,7 | 1,14-1,4 | 7,24 | 750 |
| 2 | 7,49 | 0,7 | 1,14-1,4 | 8,28 | 600 |
| 3 | 8,0 | 0,7 | 1,14-1,4 | 8,28 | 600 |
| 4 | 8,51 | 0,7 | 1,14-1,4 | 9,17 | 550 |
| 5 | 8,89 | 0,7 | 1,14-1,4 | 9,17 | 550 |
| 6 | 9,4 | 0,7 | 1,14-1,4 | 10,19 | 475 |
| 7 | 9,91 | 0,7 | 1,14-1,4 | 10,19 | 475 |
| 8 | 10,41 | 0,7 | 1,14-1,4 | 11,2 | 430 |
| 9 | 10,92 | 0,7 | 1,14-1,4 | 11,2 | 430 |

Technical Specifications

Materials:

Contact piston & base: Machined copper alloy plated 0,51µm gold over 2,54µm nickel
 Spring (Contact style 0-9): Beryllium copper-plated 0,25µm gold
 Insulator: High temperature thermoplastic, rated UL94 V-0

Mechanical:

Spring force @ initial height (A) (Contact style 0-9): 25 grams
 Spring force @ mid stroke (B/2) (Contact style 0-9): 60 grams
 Durability: Up to 1,000,000 cycles

Electrical:

Current rating: 2A (continuous), 3A (peak) per contact
 Contact resistance: 20mΩ max.
 Insulation resistance: 10,000MΩ min.
 Dielectric strength: 700Vrms min.

RoHS-2
2011/65/EU

