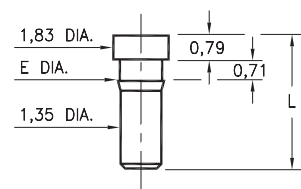


MALE PCB PINS

PRINTED CIRCUIT PINS

0259/0286/1941

XXXX-0-00-XX-00-00-03-0
Press-fit in 1,45/1,5 mounting hole
0286-0 is available on 16mm wide carrier tape; 2,500 parts per 330mm reel.
See page 224.3 for Tape & Reel details

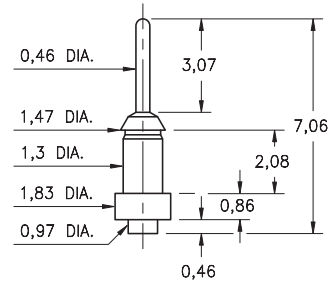


Basic Part Number	Length L	Barb Dia. E	Mounting Hole
0259-0	4,39	1,57	1,5
0286-0	2,92	1,52	1,45
* 1941-0	4,29	1,47	1,42

* Flat face Target contact

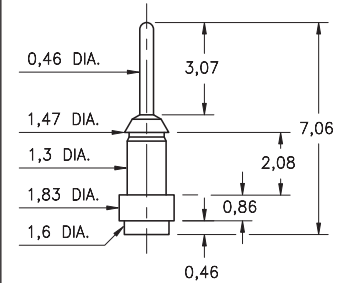
2956-0

2956-0-00-XX-00-00-03-0
Surface mount



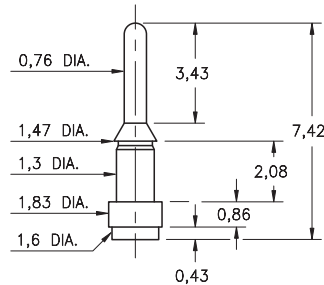
2956-1

2956-1-00-XX-00-00-03-0
Surface mount



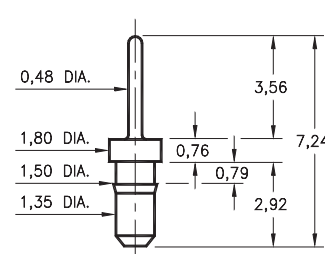
4956-1

4956-1-00-XX-00-00-33-0
Surface mount



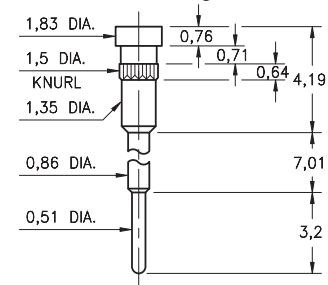
8876

8876-0-00-XX-00-00-03-0
Press-fit in 1,45 mounting hole



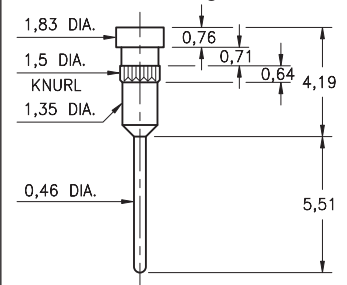
1938

1938-0-00-XX-00-00-03-0
Flat face Target contact, solder Tail
Press-fit in 1,45 mounting hole



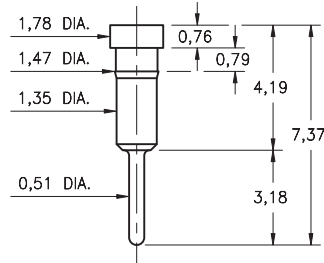
1940

1940-0-00-XX-00-00-03-0
Flat face Target contact, solder Tail
Press-fit in 1,45 mounting hole



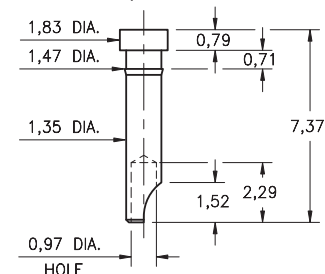
1942

1942-0-00-XX-00-00-03-0
Flat face Target contact, solder Tail
Press-fit in 1,42 mounting hole



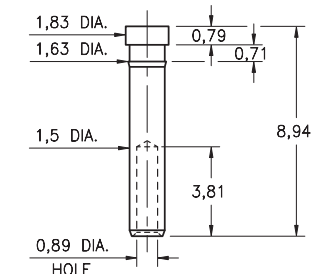
3024

3024-0-01-XX-00-00-03-0
Flat face Target contact, solder cup
Press-fit in 1,42 mounting hole
For wire sizes up to 22 AWG



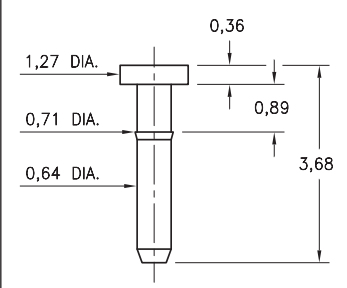
3000

3000-0-00-XX-00-00-03-0
Flat face Target contact, wire termination
Press-fit in 1,55 mounting hole. Accepts wire sizes 24 AWG Max. / 28 AWG Min.



6430

6430-0-00-XX-00-00-03-0
Press-fit in 0,64 mounting hole



SPECIFICATIONS:

Pin Material: Brass Alloy 360, 1/2 Hard
(Except swage pins which are annealed)

Dimensions: Millimeters

Tolerances On: Lengths: $\pm 0,13$
Diameters: $\pm 0,051$
Angles: $\pm 2^\circ$



ORDER CODE: XXXX - X - 0X - XX - 00 - 00 - XX - 0

BASIC PART #

SPECIFY PIN FINISH:

- 01 5,08 μ m TIN/LEAD OVER NICKEL
- ◆ 80 5,08 μ m TIN OVER NICKEL (RoHS)
- ◆ 15 0,25 μ m GOLD OVER NICKEL (RoHS)
- ◆ 21 0,51 μ m GOLD OVER NICKEL (RoHS)
- ◆ 34 1,27 μ m GOLD OVER NICKEL (RoHS)

