

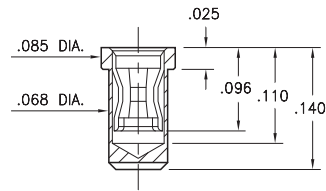
PIN RECEPTACLES

FOR .037" - .043" DIAMETER PINS

0448

0448-0-15-XX-48-27-10-0

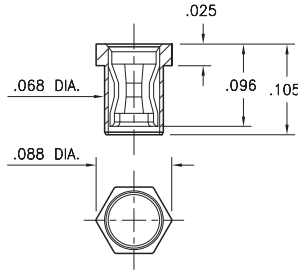
Solder mount in .071 min. mounting hole
Minimum mating lead length is .054



0640

0640-0-15-XX-48-27-10-0

Hex press-fit in .085 plated through-hole
Minimum mating lead length is .054
(Top or Bottom entry capable)



SPECIFICATIONS:

Shell Material: Brass Alloy 360, 1/2 Hard

Contact Material: Beryllium Copper Alloy 172, HT

Dimensions: Inches

Tolerances On: Lengths: ±.005

Diameters: ±.002

Angles: ±2°



ORDER CODE: XXXX - 0 - 15 - XX - 48 - XX - 10 - 0

BASIC PART #

SPECIFY SHELL FINISH:

- ◆ 80 200 μ" TIN OVER NICKEL (RoHS)
- ◆ 15 10 μ" GOLD OVER NICKEL (RoHS)

SPECIFY CONTACT FINISH:

- ◆ 27 30 μ" GOLD OVER NICKEL (RoHS)

SELECT CONTACT:

#48 CONTACT (DATA ON PAGE 257.1)