

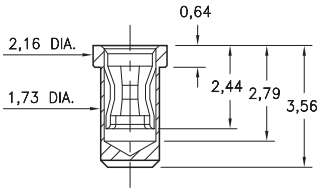
PIN RECEPTACLES

FOR 0,94 - 1,09 DIAMETER PINS

0448

0448-0-15-XX-48-27-10-0

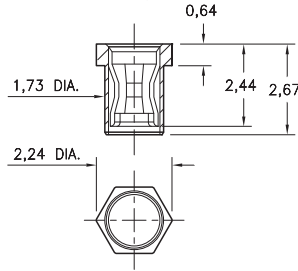
Solder mount in 1,8 min. mounting hole
Minimum mating lead length is 1,37



0640

0640-0-15-XX-48-27-10-0

Hex press-fit in 2,16 plated through-hole
Minimum mating lead length is 1,37
(Top or Bottom entry capable)



SPECIFICATIONS:

Shell Material: Brass Alloy 360, 1/2 Hard

Contact Material: Beryllium Copper Alloy 172, HT

Dimensions: Inches

Tolerances On: Lengths: $\pm 0,13$

Diameters: $\pm 0,051$

Angles: $\pm 2^\circ$



ORDER CODE: XXXX - 0 - 15 - XX - 48 - XX - 10 - 0

BASIC PART # ↑

SPECIFY SHELL FINISH: ↑

◆ 80 5,08µm TIN OVER NICKEL (RoHS)

◆ 15 0,25µm GOLD OVER NICKEL (RoHS)

SPECIFY CONTACT FINISH:

◆ 27 0,76µm GOLD OVER NICKEL (RoHS)

SELECT CONTACT:

#48 CONTACT (DATA ON PAGE 257.1)