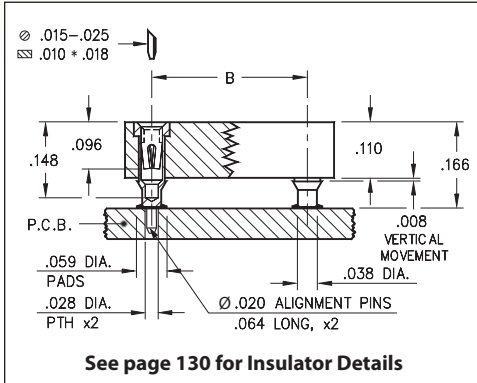
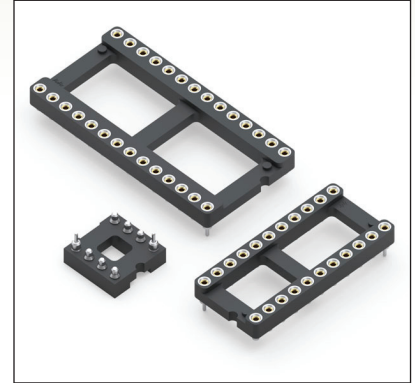


DUAL-IN-LINE SOCKETS

SERIES 113 • SURFACE MOUNT, STUB TAIL W/ ALIGNMENT PINS • OPEN FRAME



- Unique floating contacts compensate for the effects of unevenly dispensed solder paste
- Two corner alignment pins (power & ground positions) permit manual placement
- Hi-Rel, 4-finger BeCu #30 contact is rated at 3 amps. See page 253 for details
- Series 113 uses MM #1334 and #1434 pins. See pages 162 and 171
- Insulators are high temperature thermoplastic, suitable for all soldering operations
- For Electrical, Mechanical and Environmental Data, see page 264 for details



Total number of pins	ALIGNMENT PINS			Quantity per tube	ORDERING INFORMATION			
	A	B	C					
10	0.5	0.2	0.3	41	113-XX-210-41-117000			
4	0.2	0.3	0.4	100	113-XX-304-41-117000			
6	0.3	0.3	0.4	67	113-XX-306-41-117000			
8	0.4	0.3	0.4	50	113-XX-308-41-117000			
10	0.5	0.3	0.4	40	113-XX-310-41-117000			
14	0.7	0.3	0.4	28	113-XX-314-41-117000			
16	0.8	0.3	0.4	25	113-XX-316-41-117000			
18	0.9	0.3	0.4	22	113-XX-318-41-117000			
20	1.0	0.3	0.4	20	113-XX-320-41-117000			
22	1.1	0.3	0.4	18	113-XX-322-41-117000			
24	1.2	0.3	0.4	16	113-XX-324-41-117000			
28	1.4	0.3	0.4	14	113-XX-328-41-117000			
20	1.0	0.4	0.5	20	113-XX-420-41-117000			
22	1.1	0.4	0.5	18	113-XX-422-41-117000			
24	1.2	0.4	0.5	16	113-XX-424-41-117000			
28	1.4	0.4	0.5	14	113-XX-428-41-117000			
32	1.6	0.4	0.5	12	113-XX-432-41-117000			
24	1.2	0.6	0.7	16	113-XX-624-41-117000			
28	1.4	0.6	0.7	14	113-XX-628-41-117000			
32	1.6	0.6	0.7	12	113-XX-632-41-117000			
36	1.8	0.6	0.7	11	113-XX-636-41-117000			
40	2.0	0.6	0.7	10	113-XX-640-41-117000			
42	2.1	0.6	0.7	9	113-XX-642-41-117000			
48	2.4	0.6	0.7	8	113-XX-648-41-117000			
50	2.5	0.6	0.7	8	113-XX-650-41-117000			
52	2.6	0.6	0.7	7	113-XX-652-41-117000			
50	2.5	0.9	1.0	8	113-XX-950-41-117000			
52	2.6	0.9	1.0	7	113-XX-952-41-117000			
64	3.2	0.9	1.0	6	113-XX-964-41-117000			
XX=Plating Code See Below								
SPECIFY PLATING CODE XX =					93		43	
Sleeve (Pin)					200 μ" Sn/Pb		200 μ" Sn	
Contact (Clip)					30 μ" Au		30 μ" Au	