

INTERCONNECTS

SERIES 410, 411, 415 • 2,54 GRID SOLDER TAIL • DOUBLE ROW STRIPS

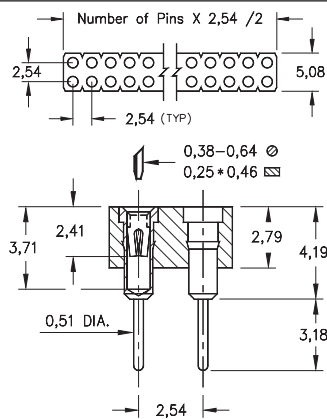


FIG. 1

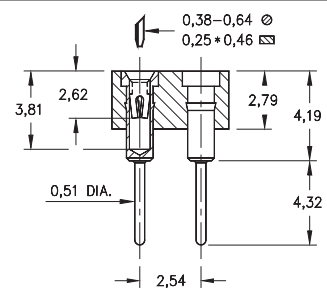


FIG. 2

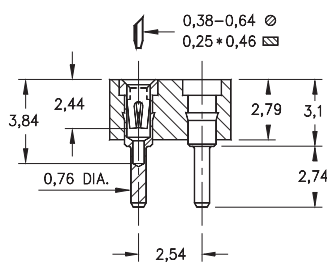


FIG. 3

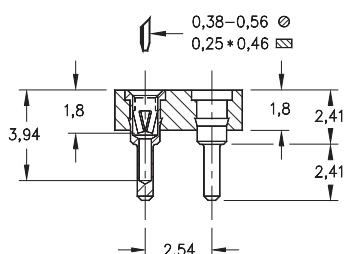
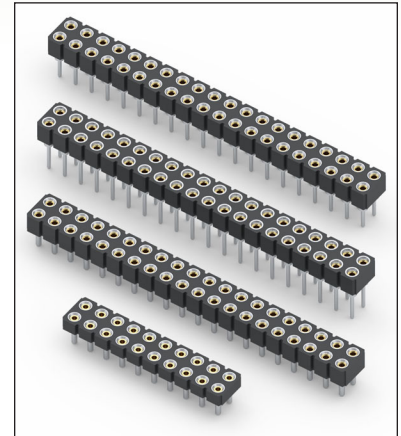


FIG. 4

- Series 41X double row strip sockets are on 2,54 grid
- Various solder tails available: standard length, long for multi-layer boards, very low and ultra low profile. See Mill-Max #1001, #0134, #0501 or #1534 pins. See pages 161, 162 and 165 for details
- Hi-Rel, 4-finger BeCu #12 and #30 contact are rated at 3 amps. See pages 252 and 253 for details
- Insulators are high temperature thermoplastic, suitable for all soldering operations



ORDERING INFORMATION

| | Series 410...001 | Standard Solder Tail |
|---------------|------------------|--------------------------------------------|
| FIG. 1 | 410-XX-2 | -41-001000 Specify number of pins 04-64 |
| FIG. 2 | Series 411...001 | Long Solder Tail |
| | 411-XX-2 | -41-001000 Specify number of pins 04-64 |
| FIG. 3 | Series 415...001 | Very Low Profile |
| | 415-XX-2 | -41-001000 Specify number of pins 04-64 |
| FIG. 4 | Series 415...003 | Ultra Low Profile |
| | 415-XX-2 | -41-003000 Specify number of pins 04-64 |

| | | |
|--|--|--|
| | | |
|--|--|--|

| SPECIFY PLATING CODE XX= | 11 | 13 | 91 | 93 | 41 | 43 | 47 |
|--------------------------|-----------|-----------|--------------|--------------|-----------|-----------|-----------|
| Sleeve (Pin) | 0,25µm Au | 0,25µm Au | 5,08µm Sn/Pb | 5,08µm Sn/Pb | 5,08µm Sn | 5,08µm Sn | 5,08µm Sn |
| Contact (Clip) | 0,25µm Au | 0,76µm Au | 0,25µm Au | 0,76µm Au | 0,25µm Au | 0,76µm Au | Au Flash |