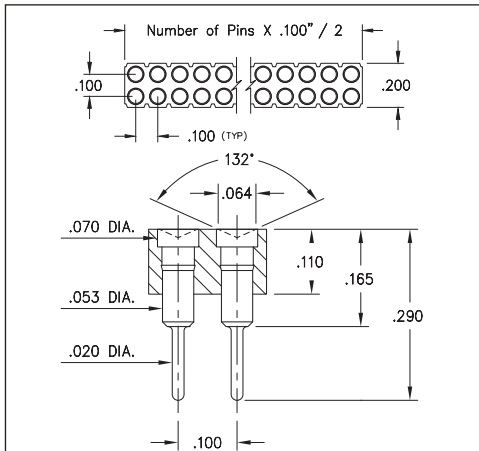
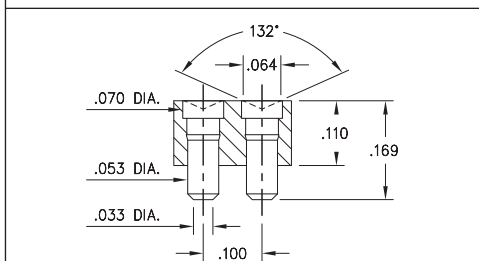


# SPRING-LOADED CONNECTORS

## SERIES 419, 499 • .100" GRID CONCAVE FACE TARGET CONNECTORS FOR SPRING-LOADED ASSEMBLIES • DOUBLE ROW STRIPS

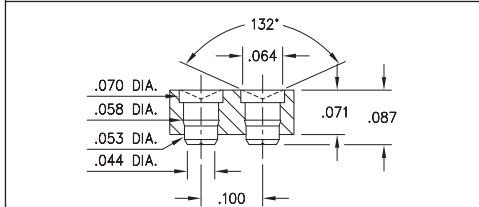


**FIG. 1**



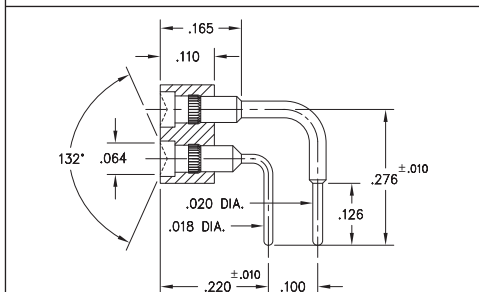
Coplanarity .005" For Pin counts >20 positions, consult Technical Support.

**FIG. 2**



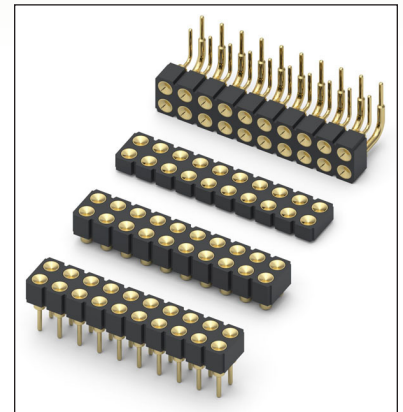
Coplanarity .005" For Pin counts >20 positions, consult Technical Support.

**FIG. 3**



**FIG. 4**

- Series 419 and 499 Spring Target Connectors, supplied in double row strips. Available in SMT and right angle through-hole termination configurations
- Target Connectors provide an excellent gold-plated conductive mating surface for spring loaded connectors. These series are offered with a concave face for making contact with our standard .042" dia. spring pin plungers
- Target connectors use MM #1947, #1948, #1955 and #1958/1960 pins. See pages 223.1, 223.2 and 223.3 for details
- Insulators are high temperature thermoplastic



### ORDERING INFORMATION

	Series 419...006	Standard Solder Tails
<b>FIG. 1</b>	419-10-2	-00-006000
	Specify number of pins	04-64
<b>FIG. 2</b>	419-10-2	-30-007000
	Specify number of pins	04-72
<b>FIG. 3</b>	419-10-2	-30-055000
	Specify number of pins	04-72
<b>FIG. 4</b>	499-10-2	-10-007000
	Specify number of pins	02-64



XX=Plating Code  
See Below

For  
Electrical, Mechanical  
& Environmental Data,  
See page 264

SPECIFY PLATING CODE XX=	10			
Pin Plating 	10 μ" Au			

