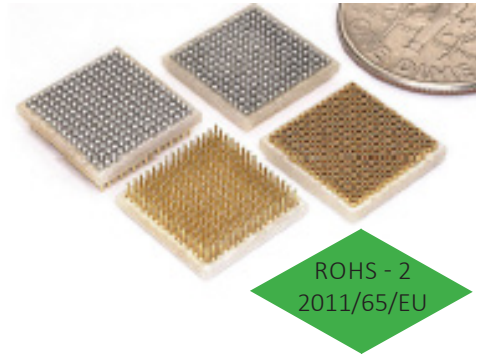


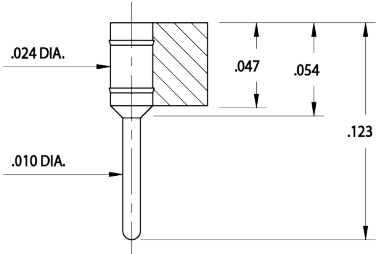
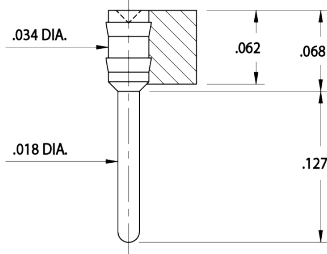
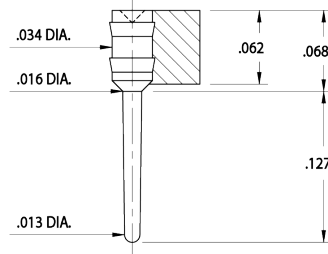
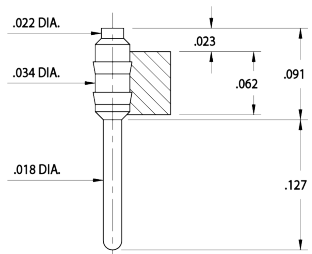
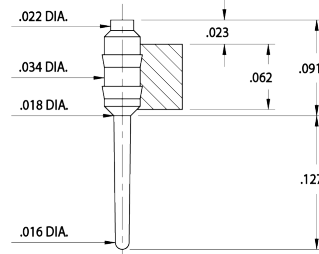
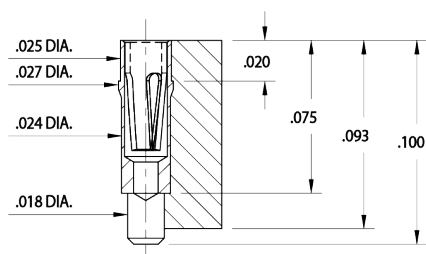
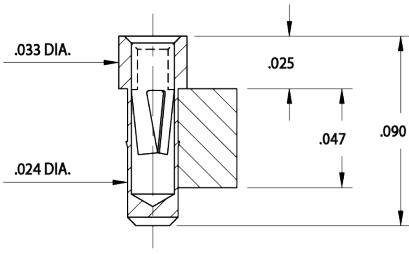
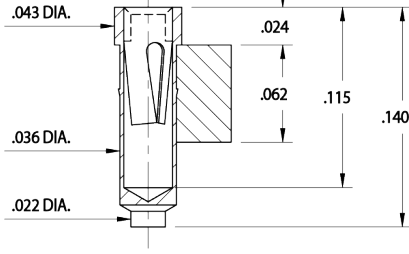
APPLICATION NOTES

BALL GRID ARRAYS

MALE PIN ADAPTERS AND FEMALE SOCKETS FOR 0,8mm GRID, 1mm GRID & .050" GRID

- BGA adapter/socket systems are a reliable way to make BGAs pluggable. They may also be used as a high density board-to-board interconnect
- The BGA device for a 0,8mm or 1mm grid is soldered to a 9929 adapter and plugged into a 9953 (0.8mm grid) or 9928 (1mm grid) surface mount socket
- The BGA device for a .050" grid is soldered to a 8737/4048 adapter and plugged into a 8214 surface mount socket
- Both socket and adapter have the same footprint as the BGA device
- Insertion force is .4N per pin for standard pins 9929, 8737, 4098. Tapered EZ-IN pins 4048/4054 reduce insertion force to only .08N, and are recommended for pin counts greater than 500
- Insulator material is FR-4 epoxy having a TCE to match the BGA device and circuit board



<p>SERIES 599...429 BGA MOUNT TYPE #9929</p>  <p>For 0,8 mm & 1mm GRID ONLY</p>	<p>SERIES 587...437 BGA MOUNT TYPE #8737</p>  <p>For .050" GRID ONLY</p>	<p>SERIES 540...448 EZ-IN BGA MOUNT TYPE #4048</p>  <p>For .050" GRID ONLY</p>
<p>SERIES 540...498 STANDARD PCB MOUNT TYPE #4098</p>  <p>For .050" GRID ONLY</p>	<p>SERIES 540...454 EZ-IN PCB MOUNT TYPE #4054</p>  <p>For .050" GRID ONLY</p>	<p>SERIES 599...453 SURFACE MOUNT TYPE #9953</p>  <p>For 0,8 mm GRID ONLY</p>
<p>SERIES 599...428 SURFACE MOUNT TYPE #9928</p>  <p>For 1mm GRID ONLY</p>	<p>SERIES 582...414 SURFACE MOUNT TYPE #8214</p>  <p>For .050" GRID ONLY</p>	

