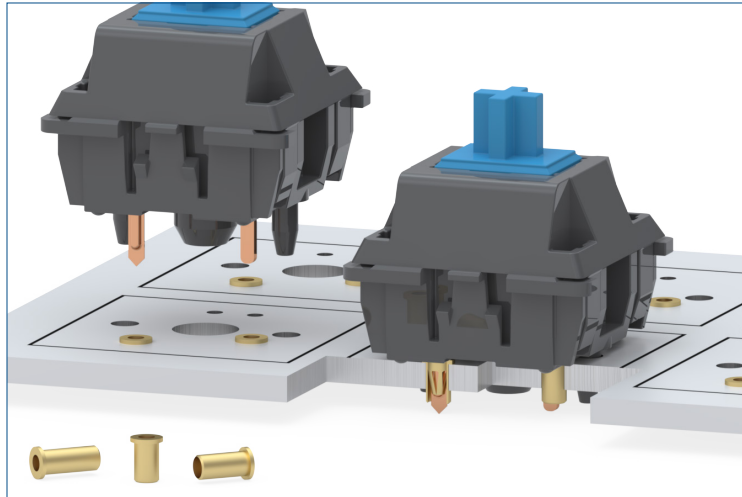


MAXIMUM SOLUTIONS

Make Key Switch Hot Swapping Effortless with Mill-Max Receptacles
Employing Mill-Max receptacles on mechanical keyboard PCB's, enables efficient replacement and upgrade of keyboard switches



Mill-Max Receptacles have long been an excellent solution for making PCB components pluggable, removable, and replaceable. Mill-Max has recently developed a new series of open bottom, low profile, solder mount receptacles specifically designed to make your mechanical key switches hot-swappable. The new [3305-X](#) is designed to be soldered into a .060" (1,50mm) minimum mounting hole, with an ultra-thin retention shoulder so plugged-in components sit nearly flush to the board surface. The open bottom design is meant to accommodate varying lead lengths making this a very versatile receptacle.

The [3305-X](#) series offers three length options of .105" (2,67mm), .130" (3,30mm) and .155" (3,94mm), all with an above-board height of .010" (0,25mm), providing the low profile desired for optimal switch height and functioning. And while these receptacles are compact in size, high quality materials make these easy-to-use parts both reliable and long-lasting. Like all Mill-Max receptacles the [3305-X](#) series utilizes a beryllium copper contact clip to make dependable, low resistance connections with mated leads and maintain those high-quality connections after thousands of cycles (plug/unplug). The [3305-X](#) accepts round leads of .025"-.037" (0,635-0,940mm) in diameter as well as square and rectangular leads (.019" - .026" square) – typical of the leads found on most keyboard switches.

The introduction of the [3305-X](#) series and this style of receptacle means that repairing, upgrading or customizing keyboards – once tedious and time-consuming endeavors – have become viable options by eliminating the painstaking task of de-soldering then re-soldering an entire keyboard- a process which could take 90 minutes or more each time, depending on the user's skill level. Conversely, after the one-time process of installing Mill-Max [3305-X](#) receptacles, all the key switches can be replaced in just a few minutes, many times over, allowing users of all skill levels to join the hot-swap keyboard movement.

Contact our technical services staff to discuss your application and how we may be able to address your needs.

For more information, please visit www.mill-max.com/PR701.