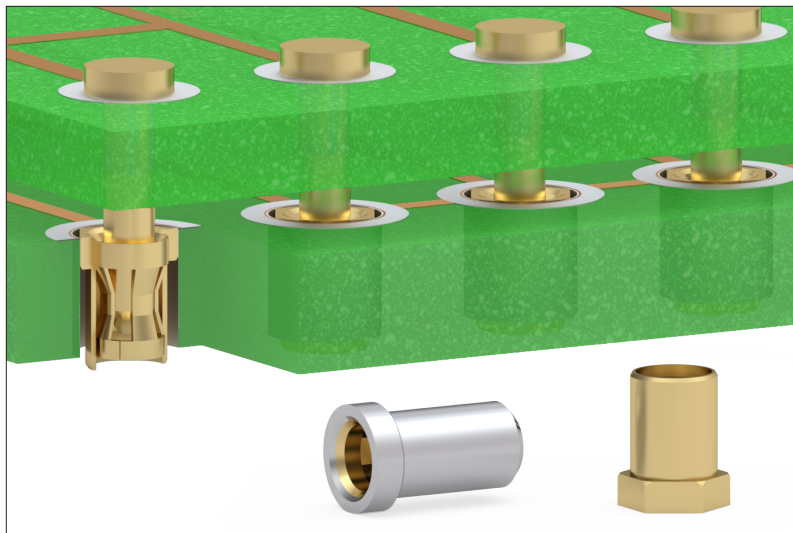


MAXIMUM SOLUTIONS

Mill-Max Expands Early Engagement Receptacles

Introducing the development of a new minimal insertion length contact, expanding our range of receptacles designed to work with shorter mating leads. The receptacles being introduced here are fitted with a new, beryllium copper contact clip which is characterized by an early engagement contact point, dual entry capability, low contact resistance and high current carrying capacity.

The 0448-0-15-15-48-27-10-0 and 0640-0-15-15-48-27-10-0 receptacles accept lead diameters from .037" - .043" (.94 – 1.09 mm) with a minimum mating lead length of .058" (1.47 mm) for top entry insertion. This is a 30% reduction in required lead length from our current receptacle offerings.



The reduction is due to the hourglass design and extended contact surface area, eliminating the need for excess protrusion through its fingers for reliable electrical contact. The ability to use shorter mating pins provides several advantages such as compressed packaging, shorter electrical signal paths and lower potential RF signal interference.

The 0448 is a closed bottom, solder mount receptacle with a .025" (.635 mm) low profile height above the board. It is designed to be soldered in a .071" (1.8 mm) minimum mounting hole. The 0640 is a zero profile, solderless press-fit receptacle with an overall

length of .105" (2.67 mm). This part features a hexagon shaped head designed to be press-fit into a .085" (2.16 mm) ϕ plated through hole. When pressed in, the 0640 sits flush with the P.C.B. surface. The 0640 is also open bottom allowing for mating pin entry from either end. The minimum mating pin length for bottom entry is .060" (1.52 mm) from the bottom of the receptacle. This dual entry feature allows for flexibility in component placement and assembly of boards and modules.

The receptacle shells are precision turned from brass alloy, featuring tight tolerances and a high-quality finish. The contact clip is press-fit into each receptacle shell forming a gas-tight connection. It is a four-finger contact, precision stamped from Beryllium Copper strip & heat treated to provide excellent spring & electrical properties. Both receptacles have a current rating of 20 Amps at a 10°C temperature rise above ambient, in free air, and less than 20 milli-ohms contact resistance. The standard plating for these receptacles is 10 u" gold on the shell and 30 u" gold on the contact to ensure the highest conductivity, corrosion resistance and durability. Tin and tin/lead plating options are also available upon request for the 0448.

For more information, please visit www.mill-max.com/PR693.

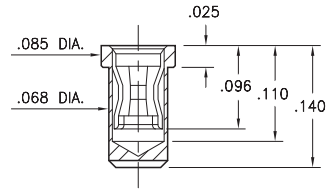
PIN RECEPTACLES

FOR .037" - .043" DIAMETER PINS

0448

0448-0-15-XX-48-27-10-0

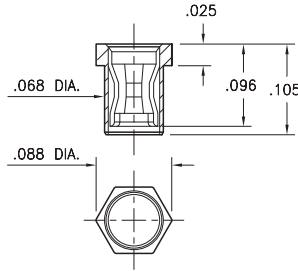
Solder mount in .071 min. mounting hole
Minimum mating lead length is .054



0640

0640-0-15-XX-48-27-10-0

Hex press-fit in .085 plated through-hole
Minimum mating lead length is .054
(Top or Bottom entry capable)



SPECIFICATIONS:

Shell Material: Brass Alloy 360, 1/2 Hard

Contact Material: Beryllium Copper Alloy 172, HT

Dimensions: Inches

Tolerances On: Lengths: $\pm .005$

Diameters: $\pm .002$

Angles: $\pm 2^\circ$



ORDER CODE: XXXX - 0 - 15 - XX - 48 - XX - 10 - 0

BASIC PART #

SPECIFY SHELL FINISH:

- ◆ 80 200 μ " TIN OVER NICKEL (RoHS)
- ◆ 15 10 μ " GOLD OVER NICKEL (RoHS)

SPECIFY CONTACT FINISH:

- ◆ 27 30 μ " GOLD OVER NICKEL (RoHS)

SELECT CONTACT:

#48 CONTACT (DATA ON PAGE 257.1)