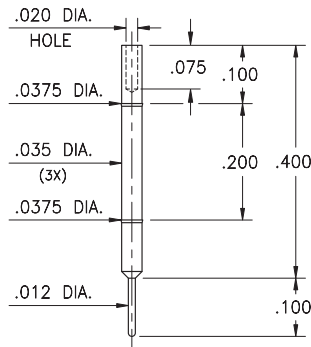


MALE PCB PINS

TOOLING FOR CRIMP PINS

4194-0-00-XX-00-00-08-0

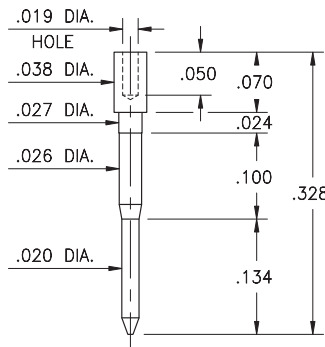
Wire crimp termination & press-fit in .036 hole
Accepts wire sizes 30 AWG Max. /34 AWG Min.



Daniels Crimp Tool #[AFM8](#)
using Daniels Positioner #[K1566](#)

5556-0-00-XX-00-00-38-0

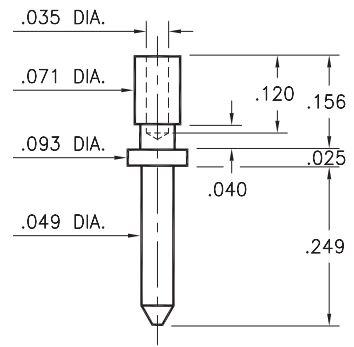
Wire crimp termination
Accepts wire sizes 30 AWG Max. /34 AWG Min.



Daniels Crimp Tool #[MH835](#)
using Daniels Positioner #[K1936](#)

3139-0-00-XX-00-00-08-0

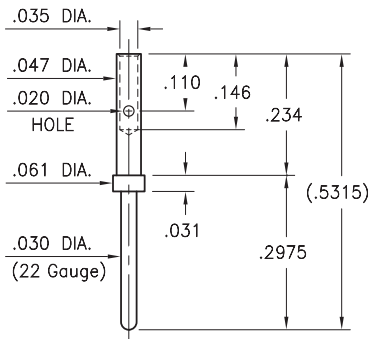
Wire crimp termination
Accepts wire sizes 24 AWG Max. /28 AWG Min.



Daniels Crimp Tool #[AFM8](#)
using Daniels Positioner #[K938](#)

3922-0-01-XX-00-00-08-0

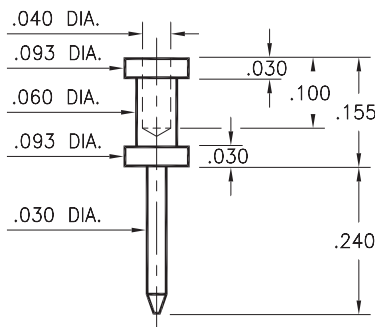
Wire crimp termination
Accepts wire sizes 22 AWG Max. /28 AWG Min.



Daniels Crimp Tool #[AFM8](#)
using Daniels Positioner #[K42](#)
Daniels Crimp Tool #[MH860](#)
using Daniels Positioner #[86-6](#)

3132-0-00-XX-00-00-08-0

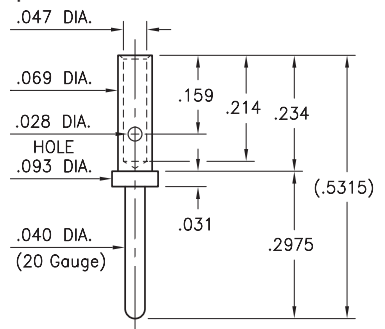
Wire crimp termination
Accepts wire sizes 22 AWG Max. /24 AWG Min.



Daniels Crimp Tool #[MH992](#)
using Daniels Positioner #[K1939](#)

3920-0-01-XX-00-00-08-0

Wire crimp termination
Accepts wire sizes 20 AWG Max. /24 AWG Min.



Daniels Crimp Tool #[AFM8](#)
using Daniels Positioner #[K43](#)
Daniels Crimp Tool #[AF8](#)
using Daniels Positioner #[TH163RED](#)
Daniels Crimp Tool #[MH860](#)
using Daniels Positioner #[86-7](#)

SPECIFICATIONS:

Pin Material: Brass Alloy 360, 1/2 Hard
(Except where noted)

Dimensions: Inches

Tolerances On: Lengths: $\pm .005$
Diameters: $\pm .002$
Angles: $\pm 2^\circ$



ORDER CODE: **XXXX - X - XX - XX - 00 - 00 - XX - 0**

BASIC PART #

SPECIFY PIN FINISH:

- 01** 200 μ " TIN/LEAD OVER NICKEL
- 80** 200 μ " TIN OVER NICKEL (RoHS)
- 15** 10 μ " GOLD OVER NICKEL (RoHS)
- 21** 20 μ " GOLD OVER NICKEL (RoHS)
- 34** 50 μ " GOLD OVER NICKEL (RoHS)

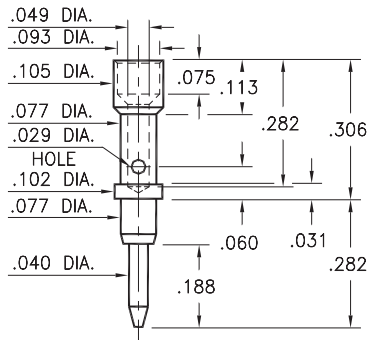


MALE PCB PINS

TOOLING FOR CRIMP PINS

3603-0-07-XX-00-00-08-0

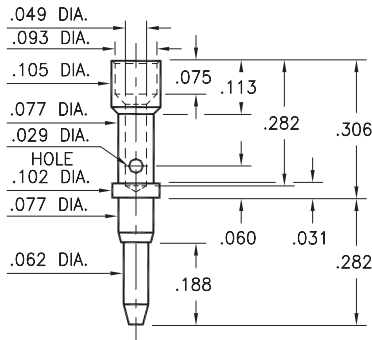
Wire crimp termination
Accepts wire sizes 20 AWG Max. /24 AWG Min.



Daniels Crimp Tool #AF8
using Daniels Positioner #TH535

3602-0-07-XX-00-00-08-0

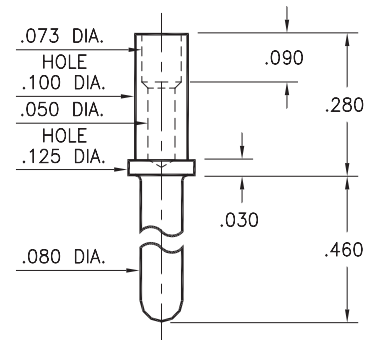
Wire crimp termination
Accepts wire sizes 20 AWG Max. /24 AWG Min.



Daniels Crimp Tool #AF8
using Daniels Positioner #TH535

0520-0-00-XX-00-00-03-0

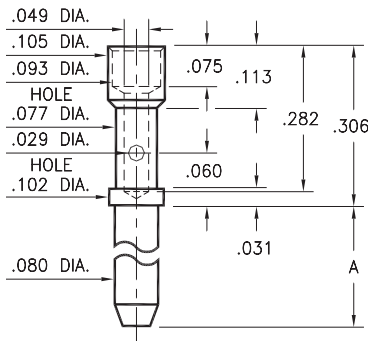
Wire crimp termination
Accepts wire sizes 20 AWG Max. /24 AWG Min.



Daniels Crimp Tool #AF8
using Daniels Positioner #TH535

3601-X-07-XX-00-00-08-0

Wire crimp termination
Accepts wire sizes 20 AWG Max. /24 AWG Min.

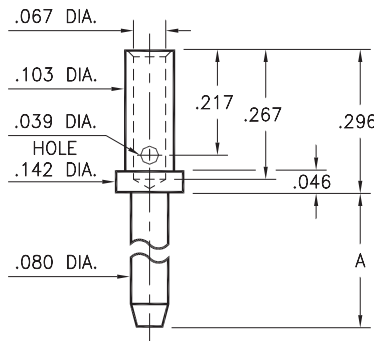


Daniels Crimp Tool #AF8
using Daniels Positioner #TH535

Basic Part Number	Pin Length A
3601-1	.200
3601-2	.375
3601-3	.500

3609-X-07-XX-00-00-08-0

Wire crimp termination
Accepts wire sizes 16 AWG Max. /20 AWG Min.



Daniels Crimp Tool #AF8
using Daniels Positioner #TH535

Basic Part Number	Pin Length A
3609-1	.200
3609-2	.375
3609-3	.500

SPECIFICATIONS:

Pin Material: Brass Alloy 360, 1/2 Hard
(Except where noted)

Dimensions: Inches

Tolerances On: Lengths: $\pm .005$
Diameters: $\pm .002$
Angles: $\pm 2^\circ$



ORDER CODE: XXXX - X - XX - XX - 00 - 00 - XX - 0

BASIC PART #

SPECIFY PIN FINISH:

- 01 200 μ " TIN/LEAD OVER NICKEL
- ◆ 80 200 μ " TIN OVER NICKEL (RoHS)
- ◆ 15 150 μ " GOLD OVER NICKEL (RoHS)
- ◆ 21 20 μ " GOLD OVER NICKEL (RoHS)
- ◆ 34 50 μ " GOLD OVER NICKEL (RoHS)

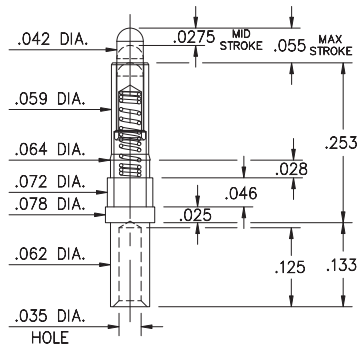


MALE PCB PINS

TOOLING FOR CRIMP PINS

0962-0-15-20-75-14-11-0

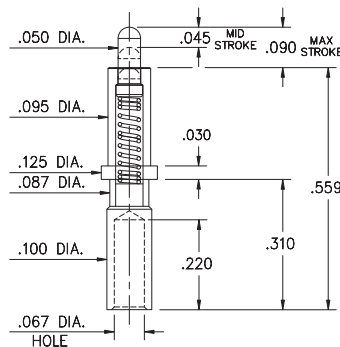
Standard stroke, Wire crimp termination
Accepts wire sizes 24 AWG Max. /28 AWG Min.



Daniels Crimp Tool [#AF8](#)
using Daniels Positioner [#TP1740](#)

0855-0-15-20-82-14-11-0

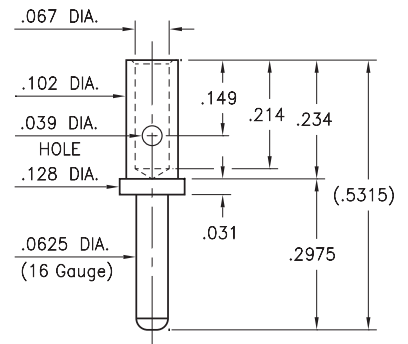
Power spring pin, Wire crimp termination
Accepts wire sizes 16 AWG Max. /20 AWG Min.



Daniels Crimp Tool [#AF8](#)
using Daniels Positioner [#TP1776](#)

3916-0-01-XX-00-00-08-0

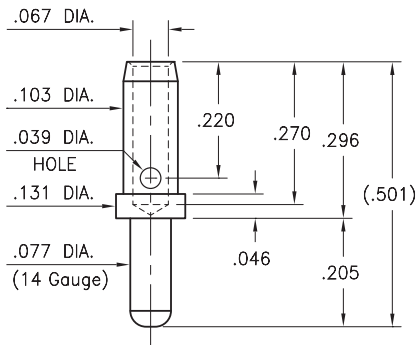
Wire crimp termination
Accepts wire sizes 16 AWG Max. /20 AWG Min.



Daniels Crimp Tool [#AF8](#)
using Daniels Positioner [#TH163BLUE](#)
Daniels Crimp Tool [#MH860](#)
using Daniels Positioner [#86-3](#)

3914-0-01-XX-00-00-08-0

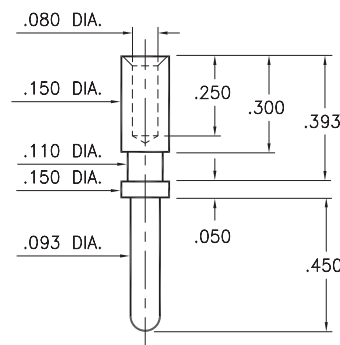
Wire crimp termination
Accepts wire sizes 14 AWG Max. /16 AWG Min.



Daniels Crimp Tool [#AF8](#)
Positioner [#TH163BLUE](#) for 16 AWG wire
Positioner [#TH163YELLOW](#) for 14 AWG wire

9092-0-00-XX-00-00-38-0

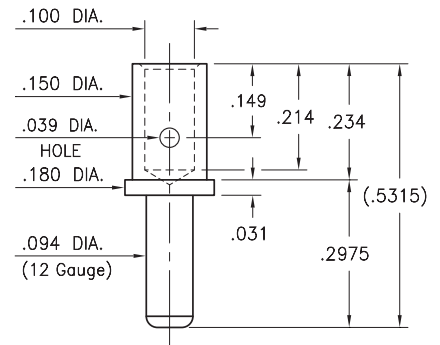
Wire crimp termination
Accepts wire sizes up to 14 AWG



Daniels Crimp Tool [#M309](#)
using Daniels Positioner [#TP1698](#)

3912-0-01-XX-00-00-08-0

Wire crimp termination
Accepts wire sizes 12 AWG Max. /14 AWG Min.



Daniels Crimp Tool [#AF8](#)
using Daniels Positioner [#TH163YELLOW](#)

Material Specifications:

Sleeve & Plunger Material: Copper Alloy
Spring Material: Beryllium Copper or SS 302
Sleeve & Plunger Finish: 20 μ" Gold over Nickel
Spring Finish: 10 μ" Gold over Nickel
Dimensions: Inches
Tolerances On: Lengths: ±.006
Diameters: ±.002
Angles: ± 2°



Mechanical & Electrical Specifications:

Durability: 1,000,000 cycles
Rated Current (Free air): Continuous 9 amps @ 10° C temperature rise
Contact Resistance: 20 mΩ max.
Environmental Specifications:
Operating temperature range: -55/+125° C

75, 82 Springs are not interchangeable

Order Code: 0XXX - X - 15 - 20 - **XX** - 14 - 11 - 0

Spring Number ↑

Spring Number	Mid. Stroke	Max. Stroke	Force @ Mid. Stroke	Initial Force (Pre-Load)
75	.0275	.055	60 g	25 g
82	.045	.090	120 g	25 g

