

# MAXIMUM SOLUTIONS

## Top-Mount SuperSpeed USB 3.1 Type C Receptacle



Mill-Max has added the **Top-Mount SuperSpeed Universal Serial Bus 3.1, Type C** to its line of USB IO Sockets. This top-mount receptacle is 2X faster than USB 3.0 with more efficient data transfer, higher throughput and improved I/O power efficiency.

### Features:

- USB 3.1 Top-Mount, Hybrid Layout
- Full metal housing with enhanced EMI/RFI prevention
- Reversible USB Type C Connector. The type C connector style has no polarization so cables, with type C plugs, may be connected regardless of orientation.
- 2X faster than USB 3.0 (up to 10 Gbps) with more efficient data transfer, higher through-put and improved I/O power efficiency.
- Maintains backward compatibility with previous USB versions
- Provides optimized power efficiency to reduce drain on portable device batteries.
- For Storage, Smartphone, Tablet, Notebook, Docking, Automotive and Home Entertainment
- Packaged on Tape & Reel, 550 parts per 13" Reel

Mill-Max also carries the Mid-Mount USB 3.1 Type C, USB SMT and through-hole, Types A and B, compatible with USB 1.0 and 2.0 specifications; USB 3.0 through-hole mount sockets, Types A and B receptacles; USB 3.0 Micro-B SMT Sockets, Type B Receptacles and Mini USB SMT Sockets, Types A and B.

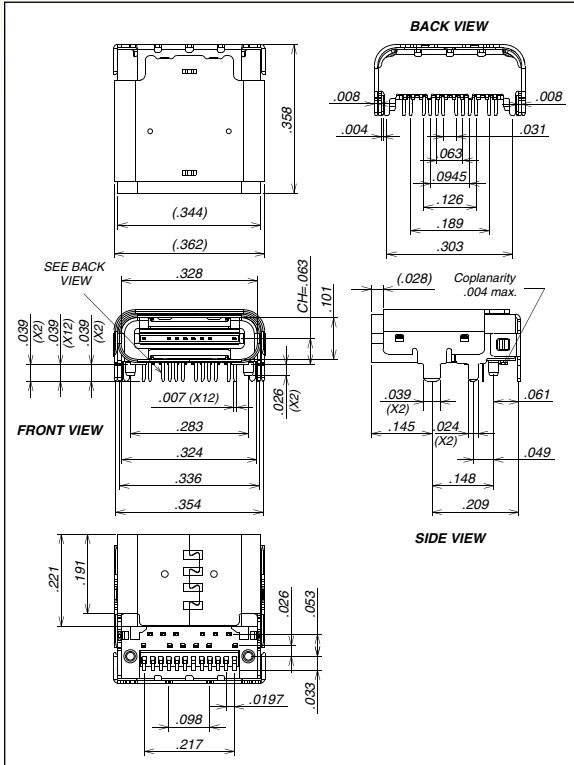
For more information, please visit: [www.mill-max.com/PR660](http://www.mill-max.com/PR660).

(11/15-- PR660)

Mill-Max Mfg. Corp. • 190 Pine Hollow Road, Oyster Bay, NY 11771  
516-922-6000 • Fax: 516-922-9253 • [www.mill-max.com](http://www.mill-max.com)



## SERIES 898 • UNIVERSAL SERIAL BUS 3.1 TYPE C • TOP MOUNT RECEPTACLE



- USB 3.1 Top Mount, Hybrid Layout
- Full metal housing with enhanced EMI/RFI prevention
- Reversible USB Type C Connector
- 10Gbps Data rate
- 2X faster than USB 3.0 with more efficient data transfer, higher through-put & improved I/O power efficiency
- For Storage, Smartphone, Tablet, Notebook, Docking, Automotive & Home Entertainment



### ORDERING INFORMATION

<b>FIG. 1</b>	<b>Top Mount Type C Receptacle, Hybrid Layout</b>
	898-73-024-90-310001
<b>(Tape &amp; Reel Packaged, 550 parts per 13" reel)</b>	

### Technical Specifications

#### Materials:

Terminals: Copper Alloy, Tin-Plated  
 Contacts: Copper Alloy, 30 μm Gold-Plated  
 Casing and Shield: Stainless Steel  
 Insulator material: High temperature thermoplastic rated UL94V-0



#### General Specifications:

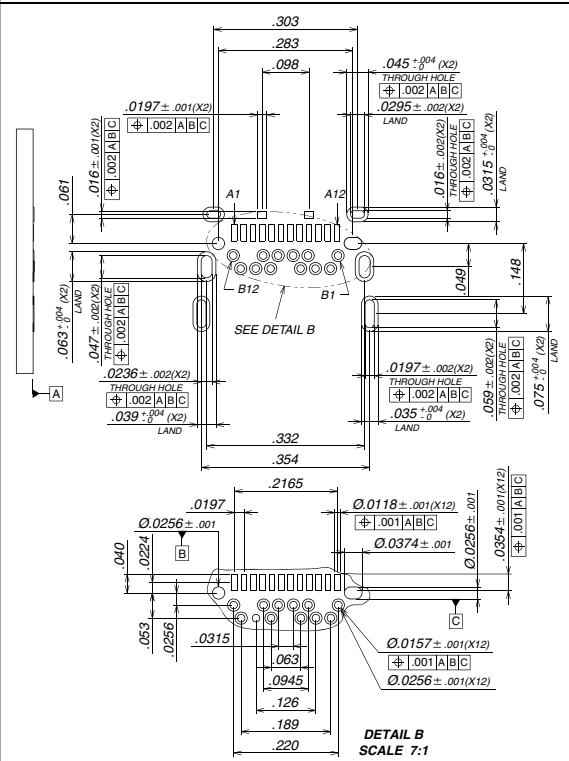
Temperature Range:  
 Storage: -20°C to +60°C  
 Operating: -40°C to +80°C  
 Nominal: +20°C

#### Electrical:

Voltage: 50VAC (rms)  
 LLCR: 40mΩ (initial), Δ10mΩ (after)  
 Dielectric Strength: 100VAC  
 Insulation resistance: 100MΩ min.  
 Current Rating: VBUS and GND contacts rated @ 1.25A each, paralleled for a total of 5A

#### Mechanical:

Durability: 10,000 cycles  
 Insertion force: 20 Newtons max.  
 Extraction force: 8 Newtons min., 20 Newtons max.



**FIG. 1**