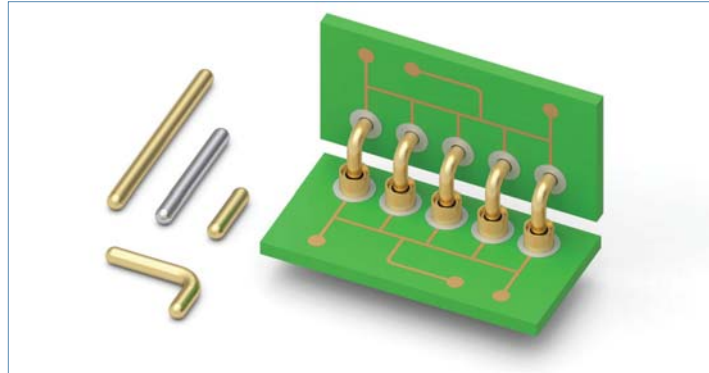


MAXIMUM SOLUTIONS

Mill-Max Expands its Series of Straight and Right Angle Pins



Mill-Max has developed additional [straight and right angle male PCB pins](#) to complement the existing 35XX and 37XX series. In addition to the .020" (0,51mm), .025" (0,63mm), .030" (0,76mm) and .040" (1,02mm) diameters available, these new pins now offer diameters of .060" (1,52mm) and .080" (2,03mm). They are suitable for plugging into receptacles and/or soldering into printed circuit boards. The new .060" (1,52mm) and .080" (2,03mm) diameter pins are a good fit for applications demanding high mechanical strength or to meet higher current requirements.

The 37XX series is ideal for any situation where a right angle connection is required. They can be soldered on to a daughter card and plugged into receptacles or connectors on a motherboard for perpendicular board mating. They can also be combined with right angle receptacles or connectors to mate boards in parallel (daisy chaining). These brass pins are precision-machined and are closely monitored to produce pins with consistent bends each time. The tips of the pins have a full radius shape making them easy to plug into board holes or receptacles.

The straight pins, series 35XX, come in three lengths, .250" (6,35mm), .500" (12,7mm) and .750" (19,0mm) and are available in diameters of .060" (1,52mm) and .080" (2,03mm).

The standard plating option is 10 micro inches gold over nickel. As always, other plating options are available upon request.

For more information, please visit: www.mill-max.com/PR664.

(PR664 -- 4/16)

Mill-Max Mfg. Corp. • 190 Pine Hollow Road, Oyster Bay, NY 11771
516-922-6000 • Fax: 516-922-9253 • www.mill-max.com

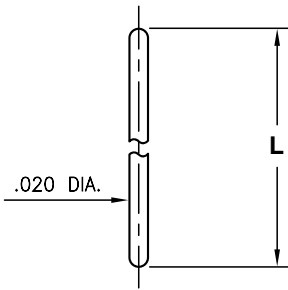


MALE PCB PINS

STRAIGHT PINS

3320

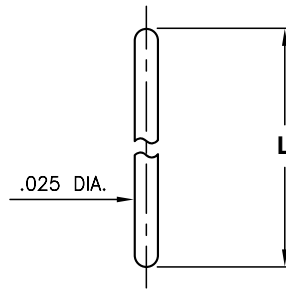
3320-X-00-XX-00-00-03-0



Basic Part Number	Length L
3320-0	.250
3320-1	.500

3325/6527

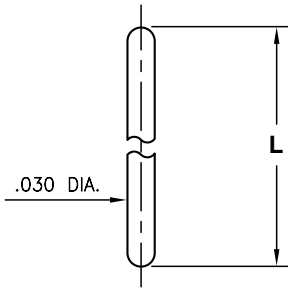
XXXX-X-00-XX-00-00-03-0



Basic Part Number	Length L
3325-0	.250
3325-1	.500
3325-2	.750
6527-0	.420

3330

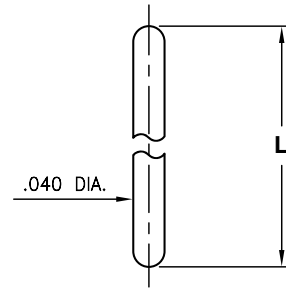
3330-X-00-XX-00-00-03-0



Basic Part Number	Length L
3330-0	.250
3330-1	.500
3330-2	.750

3340

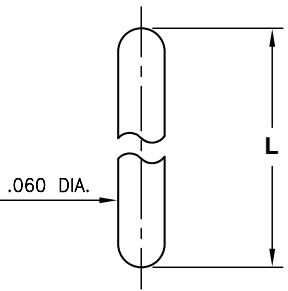
3340-X-00-XX-00-00-03-0



Basic Part Number	Length L
3340-0	.250
3340-1	.500
3340-2	.750

3560

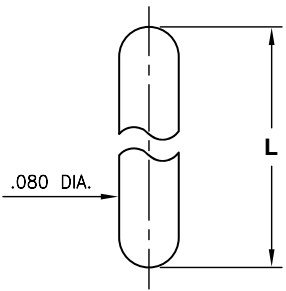
3560-X-00-XX-00-00-03-0



Basic Part Number	Length L
3560-0	.250
3560-1	.500
3560-2	.750

3580

3580-X-00-XX-00-00-03-0



Basic Part Number	Length L
3580-0	.250
3580-1	.500
3580-2	.750

SPECIFICATIONS:

Pin Material: Brass Alloy 360, 1/2 Hard
(Except where noted)

Dimensions: Inches

Tolerances On: Lengths: $\pm .005$
Diameters: $\pm .002$
Angles: $\pm 2^\circ$



ORDER CODE: XXXX - X - 00 - XX - 00 - 00 - 03 - 0

BASIC PART # →

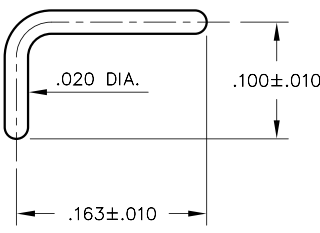
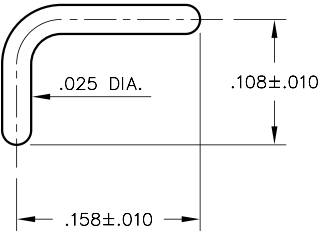
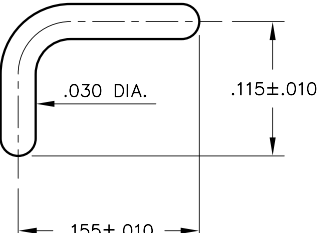
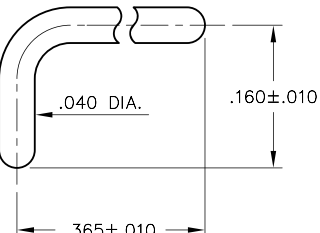
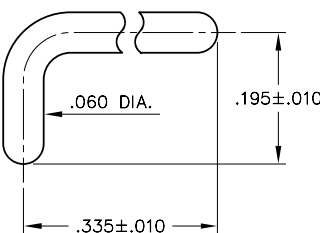
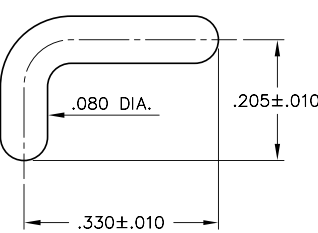
← **SPECIFY PIN FINISH:**

- ◆ **80** 200 μ " TIN OVER NICKEL (RoHS)
- ◆ **15** 10 μ " GOLD OVER NICKEL (RoHS)



MALE PCB PINS

RIGHT ANGLE PINS

<p>3720 3720-0-14-XX-00-00-03-0 Right Angle Bent Pin</p> 	<p>3725 3725-0-14-XX-00-00-03-0 Right Angle Bent Pin</p> 	<p>3730 3730-0-14-XX-00-00-03-0 Right Angle Bent Pin</p> 	<p>3740 3740-0-14-XX-00-00-03-0 Right Angle Bent Pin</p> 
<p>3760 3760-0-14-XX-00-00-03-0 Right Angle Bent Pin</p> 	<p>3780 3780-0-14-XX-00-00-03-0 Right Angle Bent Pin</p> 		

SPECIFICATIONS:

Pin Material: Brass Alloy 360, 1/2 Hard
(Except where noted)

Dimensions: Inches

Tolerances On: Lengths: ±.005
Diameters: ±.002
Angles: ± 2°



ORDER CODE: 37XX - X - 00 - XX - 00 - 00 - 03 - 0

BASIC PART # →

SPECIFY PIN FINISH:

- ◆ 80 200 μ" TIN OVER NICKEL (RoHS)
- ◆ 15 10 μ" GOLD OVER NICKEL (RoHS)

