

MAXIMUM SOLUTIONS

Mill-Max SMT Spring-Loaded Connectors



Mill-Max is pleased to announce the development of several new SMT Spring-Loaded Connectors (SLCs). All are offered as discrete contacts and many are available in tape and reel packaging.

New Mill-Max part family [0910-0](#) and [0910-1 through -4](#) are discrete SLCs specifically designed for production tape and reel assembly.

Part [0967](#) is a horizontal mount SMT SLC designed for low-profile board to board interconnections.

New Mill-Max part family [0990-0](#) and [0990-1 through -4](#) and [0997-0 through -9](#) are discrete SLCs featuring a large base utilized for either increased PCB stability or assembly in non-PCB applications such as a face plate. These part families offer a range of application heights from .137" to .430" (3,48mm to 10,92mm.)

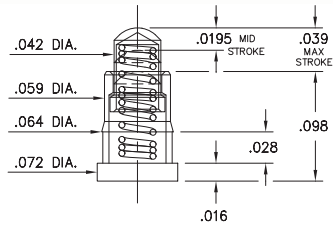
For further information visit: mill-max.com/PR603.

SPRING-LOADED PINS

DISCRETE SPRING-LOADED CONTACTS • SURFACE MOUNT

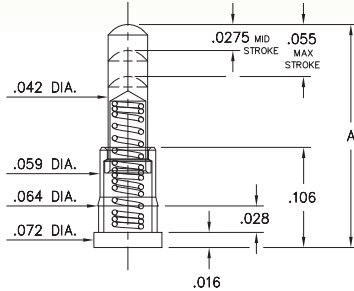
0900-0

0900-0-15-20-76-14-11-0
"Legacy P/N 0900-0-00-00-00-00-11-0"
Short stroke, Surface mount



0900-1 ⇨ 4,8

0900-X-15-20-75-14-11-0
"Legacy P/N 0900-X-00-00-00-00-11-0"
Standard stroke, Surface mount

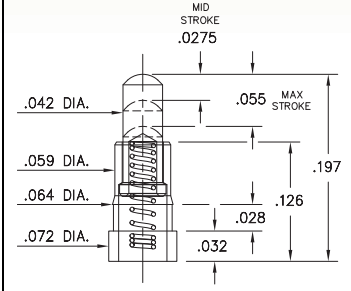


Basic Part Number	Length A
0900-1	.177
0900-2	.197
0900-3	.217
0900-4	.236
* 0900-8	.155

* 0900-8 has a .0195 Mid Stroke & .039 Max. Stroke
Order as:
0900-8-15-20-76-14-11-0

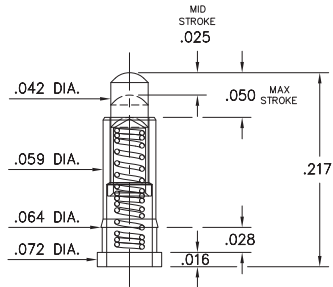
0934

0934-0-15-20-74-14-26-0
Standard stroke, Surface mount



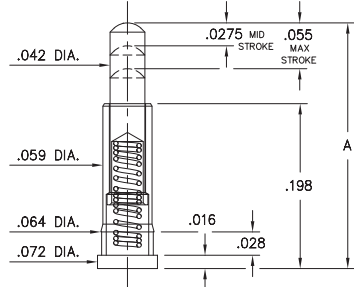
0936

0936-0-15-20-75-14-11-0
Standard stroke, Surface mount



0907-0 ⇨ 9

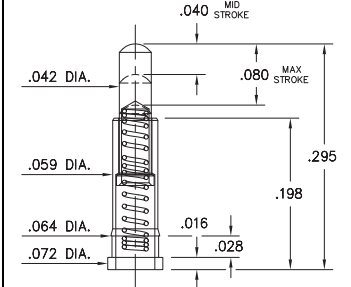
0907-X-15-20-75-14-11-0
Standard stroke, Surface mount, Mid profile



Basic Part Number	Length A
0907-0	.255
0907-1	.275
0907-2	.295
0907-3	.315
0907-4	.335
0907-5	.350
0907-6	.370
0907-7	.390
0907-8	.410
0907-9	.430

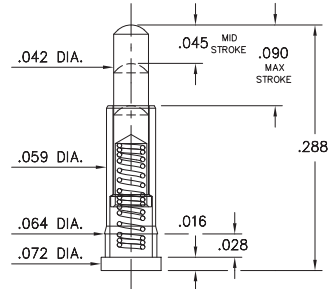
0928

0928-0-15-20-77-14-11-0
Long stroke, Surface mount



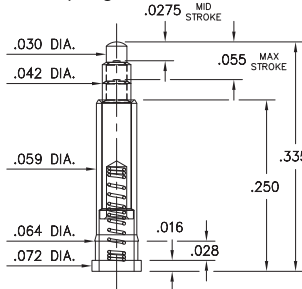
0913

0913-0-15-20-77-14-11-0
Long stroke, Surface mount, Mid profile



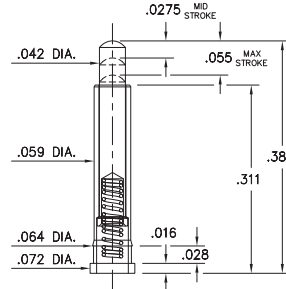
0925

0925-0-15-20-73-14-26-0
Standard stroke, Surface mount
Reduced plunger



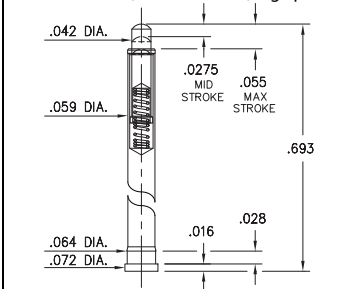
0927

0927-0-15-20-75-14-11-0
Standard stroke, Surface mount, Mid profile



0905

0905-0-15-20-75-14-11-0
"Legacy P/N 0905-0-00-00-00-00-11-0"
Standard stroke, Surface mount, High profile



Material Specifications:

Sleeve & Plunger Material: Copper Alloy
Spring Material: Beryllium Copper
Sleeve & Plunger Finish: 20 μ" Gold over Nickel
Spring Finish: 10 μ" Gold over Nickel
Dimensions: Inches
Tolerances On: Lengths: ± .006
Diameters: ± .002
Angles: ± 2°



Mechanical & Electrical Specifications:

Durability: 1,000,000 cycles
Current Rating: 2A continuous, 3A peak
Contact Resistance: 20 mΩ max.
Environmental Specifications:
Operating temperature range: -55/+125° C

73, 74, 75, 76, 77 Springs are not interchangeable

Order Code: 09XX - X - 15 - 20 - **7X** - 14 - XX - 0

Spring Number

Spring Number	Mid. Stroke	Max. Stroke	Force @ Mid. Stroke	Initial Force (Pre-Load)
73	.0275	.055	60 g	25 g
74	.0275	.055	50 g	15 g
75	.0275	.055	60 g	25 g
76	.0195	.039	60 g	25 g
77	.045	.090	60 g	25 g



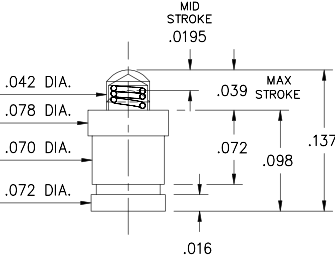
SPRING-LOADED PINS

DISCRETE SPRING-LOADED CONTACTS • SURFACE MOUNT

0910-0

0910-0-57-20-76-14-11-0

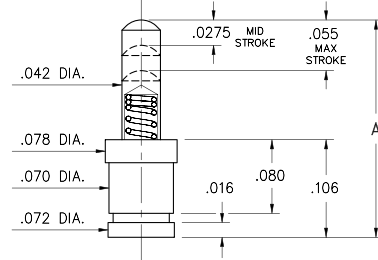
Short stroke, Surface mount
Packaged on 16mm wide carrier tape:
2,000 parts per 13" reel.



0910-1 ⇨ 4

0910-X-57-20-75-14-11-0

Standard stroke, Surface mount
Packaged on carrier tape.
See chart for tape width and qty. per reel



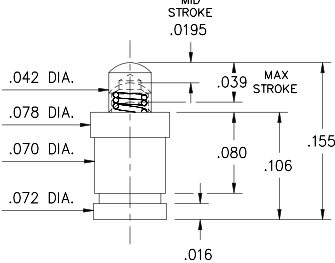
Basic Part Number	Length A
0910-1	.177
0910-2	.197
0910-3	.217
0910-4	.236

Basic Part Number	Tape Width	Quantity per Reel
0910-1	16mm	1,500
0910-2	24mm	1,100
0910-3	24mm	1,100
0910-4	24mm	1,100

0910-8

0910-8-57-20-76-14-11-0

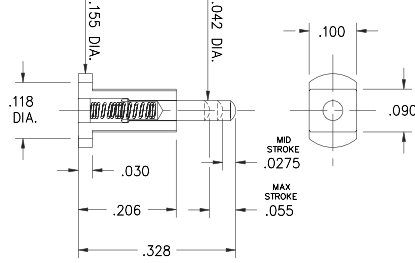
Short stroke, Surface mount
Packaged on 16mm wide carrier tape:
1,800 parts per 13" reel.



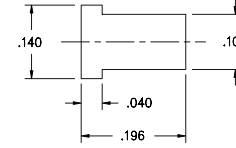
0967

0967-0-15-20-75-14-11-0

Standard stroke, Horizontal surface mount
Also available on 16mm wide carrier tape: 2,200 parts per 13" reel. Order as: 0967-0-58-20-75-14-11-0



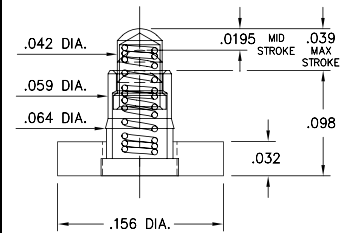
P.C.B. Layout



0990-0

0990-0-50-20-76-14-11-0

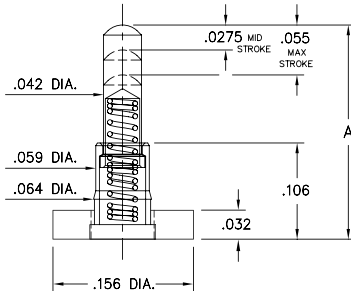
Short stroke, Surface mount, Large base



0990-1 ⇨ 4

0990-X-50-20-75-14-11-0

Standard stroke, Surface mount, Large base

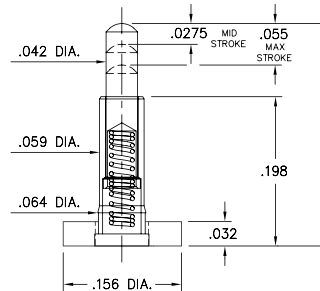


Basic Part Number	Length A
0990-1	.177
0990-2	.197
0990-3	.217
0990-4	.236

0997-0 ⇨ 9

0997-X-50-20-75-14-11-0

Standard stroke, Surface mount, Large base, Mid profile



Basic Part Number	Length A
0997-0	.255
0997-1	.275
0997-2	.295
0997-3	.315
0997-4	.335
0997-5	.350
0997-6	.370
0997-7	.390
0997-8	.410
0997-9	.430

Material Specifications:

Sleeve & Plunger Material: Copper Alloy
Spring Material: Beryllium Copper
Sleeve & Plunger Finish: 20 μ" Gold over Nickel
Spring Finish: 10 μ" Gold over Nickel
Dimensions: Inches
Tolerances On: Lengths: ± .006
 Diameters: ± .002
 Angles: ± 2°



Mechanical & Electrical Specifications:

Durability: 1,000,000 cycles
Current Rating: 2A continuous, 3A peak
Contact Resistance: 20 mΩ max.
Environmental Specifications:
Operating temperature range: -55/+125° C

75, 76 Springs are not interchangeable

Order Code: 09XX - X - XX - 20 - **7X** - 14 - 11 - 0

Spring Number

Spring Number	Mid. Stroke	Max. Stroke	Force @ Mid. Stroke	Initial Force (Pre-Load)
75	.0275	.055	60 g	25 g
76	.0195	.039	60 g	25 g

