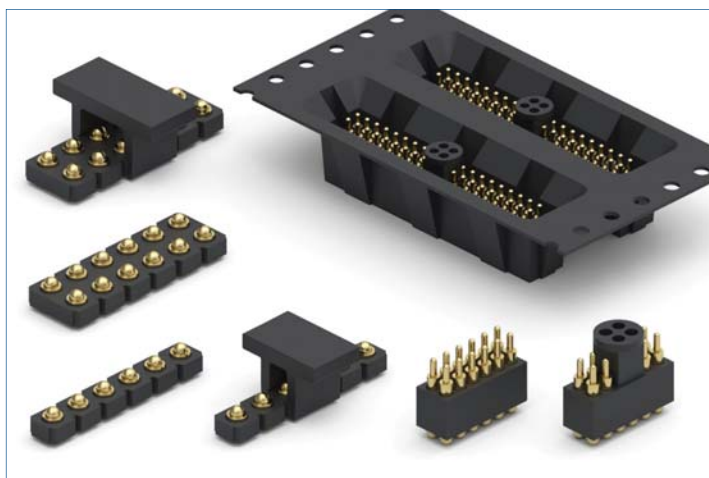


MAXIMUM SOLUTIONS

Every Mill-Max SMT Spring-Loaded Connector Now Offered on T&R



Three additional Mill-Max SMT spring-loaded connectors are now available packaged on tape and reel. With this development, all SMT spring-loaded connectors are now offered on tape and reel for automated pick & place assembly.

The [855-22-XXX-30-002191](#), from 4-40 positions, are double row and on a space saving .050" (1.27 mm) grid. Each spring pin features a base geometry of .029" (0,74 mm) round by .010" (0,25 mm) tall to maximize soldering surface area and provide secure attachment to the PCB. They can now be supplied on tape and reel thanks to a special "cap" which provides a pick & place surface for easy removal from the pocket and placement on the board. Each pin position has its own size tape. Please speak with an applications engineer for details.

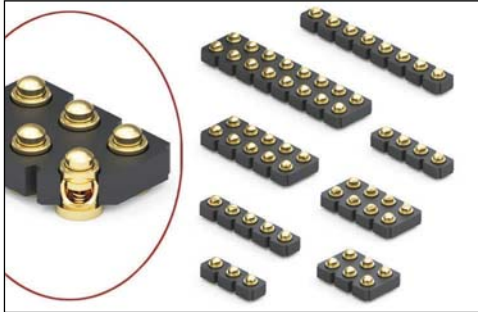
The lowest profile spring-loaded connectors, just .100" in height, are offered in single row, series [815-22-0XX-30-001191](#) and double row, series [817-22-0XX-30-001191](#), both on .100" (2,54 mm) grid. The single row is available in 2-10 positions and the double row in 4 -20 positions. Both the 815 and 817 series have a mid-stroke travel of .012" (.3mm) and full stroke capability of .020" - .024" (.508 - .61 mm). For surface mount applications where above board height is limited, these connectors are ideal.

The 815 series is packaged on 44mm wide tape, 910 parts per 13" reel; the 817 series comes on 44mm wide tape, 680 parts per 13" reel.

For more information, please visit: www.mill-max.com/PR658.

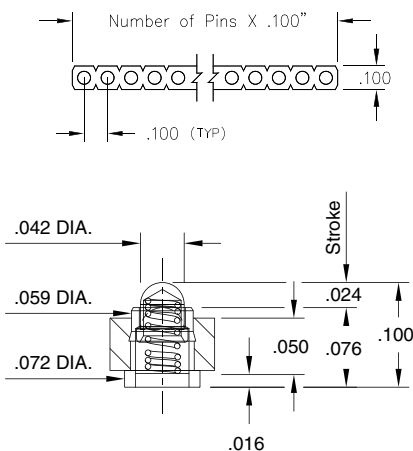
SPRING-LOADED CONNECTORS

SERIES 815 & 817 • .100" GRID SURFACE MOUNT, ULTRA LOW PROFILE • SINGLE AND DOUBLE ROW STRIPS

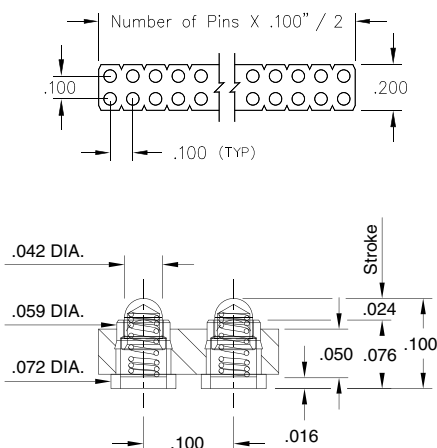


- Modular contacts for use on .100" grid, available in a height of .100", supplied in single and double row contact strips
- Precision-machined piston / base and gold-plated components assure a 1,000,000 cycle life durability
- Pistons have a .012" mid. stroke and a .024" max. stroke
- Low resistance, high current contacts are rated at 2 amps continuous, 3 amps peak
- High temperature thermoplastic insulators are suitable for surface mount processes
- 815 & 817 series contact strips are designed for manual placement onto a .082"Ø solder pad prior to reflow soldering

SINGLE ROW Series 815



DOUBLE ROW Series 817



ORDERING INFORMATION

Single Row Series 819

815-22-0XX-30-001101

Specify number of contacts 01-32

For 815 and 817 Tape & Reel packaging, see page 12.1

Double Row Series 820

817-22-0XX-30-001101

Specify number of contacts 04-72

For 815 and 817 Tape & Reel packaging, see page 12.1

Technical Specifications

Materials:

Contact piston & base: Machined copper alloy plated 20µ" gold over 100µ" nickel
Spring: Beryllium copper-plated 10µ" gold
Insulator: High temperature thermoplastic, rated UL94 V-0

Mechanical:

Spring force @ initial height: 25 grams
Spring force @ mid stroke (.012"): 60 grams
Durability: 1,000,000 cycles
Coplanarity: .005" (Single Row up to 10 pins; Double Row up to 20 pins),
For higher pin counts, contact Technical Support

Electrical:

Voltage rating: 100Vrms/150Vdc
Current rating: 2A (continuous), 3A (peak) per contact
Contact resistance: 20mΩ max.
Insulation resistance: 10,000MΩ min.
Dielectric strength: 700Vrms min.
Capacitance: 1pF max.

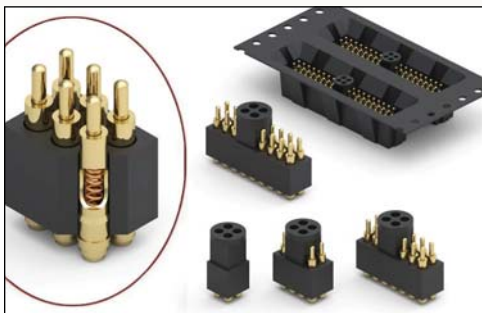
RoHS-2
2011/65/EU



Mill-Max Mfg. Corp. • 190 Pine Hollow Road, P.O. Box 300, Oyster Bay, NY 11771 • 516-922-6000 • Fax: 516-922-9253 • www.mill-max.com

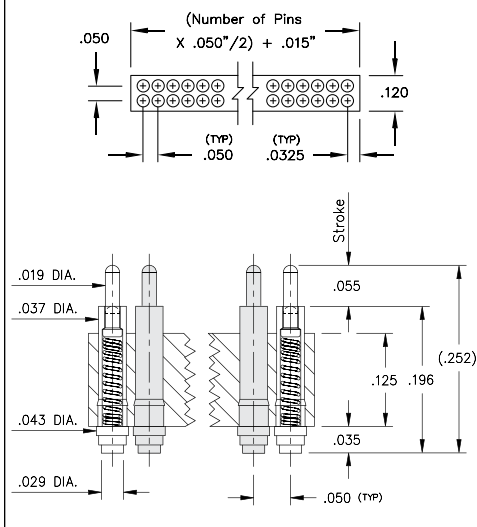
SPRING-LOADED CONNECTORS

SERIES 855 • .050" GRID SURFACE MOUNT, HIGH DENSITY • DOUBLE ROW STRIPS ON TAPE & REEL

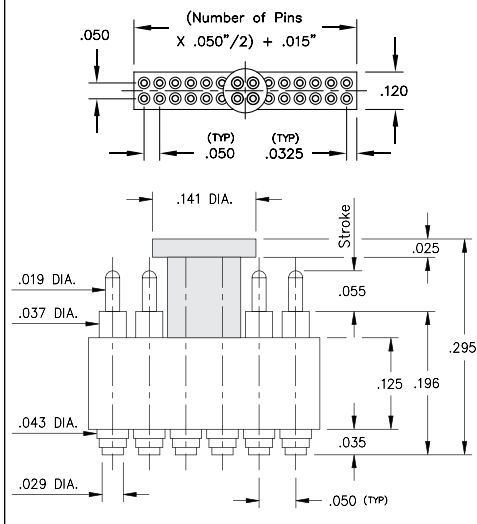


- Modular contacts for use on .050" grid, supplied in single and double row contact strips
- Precision-machined piston / base and gold-plated components assure a 1,000,000 cycle life durability
- Pistons have a .0275" mid. stroke and a .055" max. stroke
- Low resistance, high current contacts are rated at 2 amps continuous, 3 amps peak
- High temperature thermoplastic insulators are suitable for surface mount processes
- 855 series is available on carrier tape for automated pick and place assembly. Tape and Reel packaging per EIA-481. For details contact Mill-Max Technical support

DOUBLE ROW Series 855



Series 855 w/ removable pick n place cap



ORDERING INFORMATION

Double Row Series 855

Specify number or pins
04-40

855-22-0XX-30-002191

Tape & reel packaged = 191
660 parts per 13" reel

Positions: 6, 10, 14, 18, 22, 26, 30, 34, 38 the Pick n Place Vacuum Cap will be offset from center by .025"

Positions: 4, 8, 12, 16, 20, 24, 28, 32, 36, 40 the Pick n Place Vacuum Cap will be centered

Technical Specifications

Materials:

Contact piston & base: Machined copper alloy plated 20μ" gold over 100μ" nickel
Spring: Beryllium copper-plated 10μ" gold
Insulator: High temperature thermoplastic, rated UL94 V-0

Mechanical:

Spring force @ initial height: 25 grams
Spring force @ mid stroke (.0275"): 60 grams
Durability: 1,000,000 cycles

Electrical:

Voltage rating: 100Vrms/150Vdc
Current rating: 2A (continuous), 3A (peak) per contact
Contact resistance: 20mΩ max.
Insulation resistance: 10,000MΩ min.
Dielectric strength: 700Vrms min.
Capacitance: 1pF max.

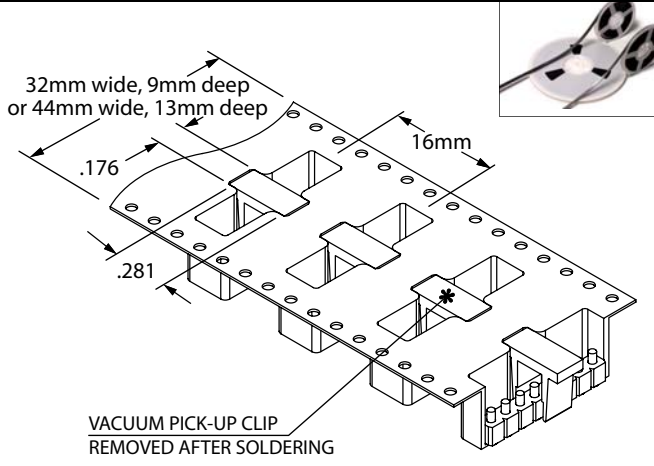
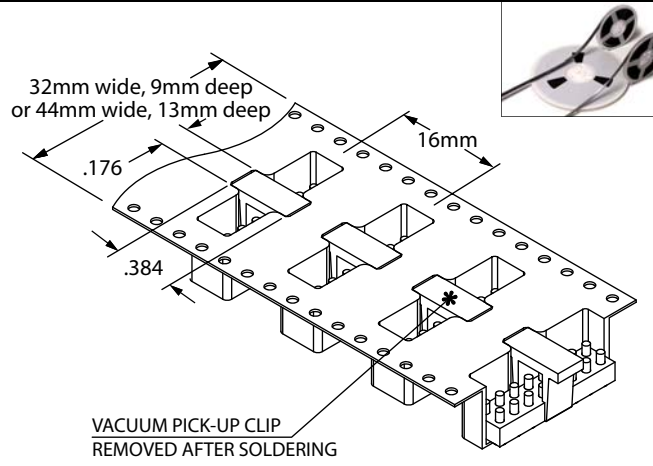
RoHS-2
2011/65/EU



SPRING-LOADED CONNECTORS

SERIES 815, 817, 819, 820 • .100" GRID SURFACE MOUNT • CARRIER TAPE AND PACKAGING

Ordering Information for Series 815/817/819/820 in Carrier Tape

Single Row Series 815	Double Row Series 817
<p>815-22-0XX-30-001191</p> <p>Specify number of pins — 02-10</p> <p>(44mm wide tape, 910 parts per 13" reel)</p>	<p>817-22-0XX-30-001191</p> <p>Specify number of pins — 04-20</p> <p>(44mm wide tape, 680 parts per 13" reel)</p>
Single Row Series 819	Double Row Series 820
<p>819-22-0XX-30-001191</p> <p>Specify number of pins — 02-08</p> <p>(32mm wide tape, 400 parts per 13" reel)</p>	<p>820-22-0XX-30-001191</p> <p>Specify number of pins — 04-16</p> <p>(32mm wide tape, 400 parts per 13" reel)</p>
Single Row Series 819	Double Row Series 820
<p>819-22-0XX-30-001191</p> <p>Specify number of pins — 09-12</p> <p>(44mm wide tape, 200 parts per 13" reel)</p>	<p>820-22-0XX-30-001191</p> <p>Specify number of pins — 18-24</p> <p>(44mm wide tape, 200 parts per 13" reel)</p>
 <p>32mm wide, 9mm deep or 44mm wide, 13mm deep</p> <p>.176</p> <p>.281</p> <p>16mm</p> <p>VACUUM PICK-UP CLIP REMOVED AFTER SOLDERING</p>	 <p>32mm wide, 9mm deep or 44mm wide, 13mm deep</p> <p>.176</p> <p>.384</p> <p>16mm</p> <p>VACUUM PICK-UP CLIP REMOVED AFTER SOLDERING</p>