

# MAX solutions

## Mill-Max Bifucated Pins



The bifurcated pin (P/N 7310-0-01-21-00-00-08-0) is a fine example of Mill-Max's ingenuity and skill in designing and manufacturing precision-machined pins.

The bifurcated pin has a .040" diameter to mate with a wide range of Mill-Max receptacles using our #34 contact. The pin mounts on the edge of a printed circuit board with the pin parallel to the board. The square section presses into a hole near the edge of the board, and remains secure prior to wave or reflow soldering.

This pin is widely used for the cable TV industry. It is commonly used in groups of 3 or 5 on the edge of a filter card used in CATV distribution amplifiers. The rugged design is ideal for field installation over the 20 year anticipated life of the equipment.

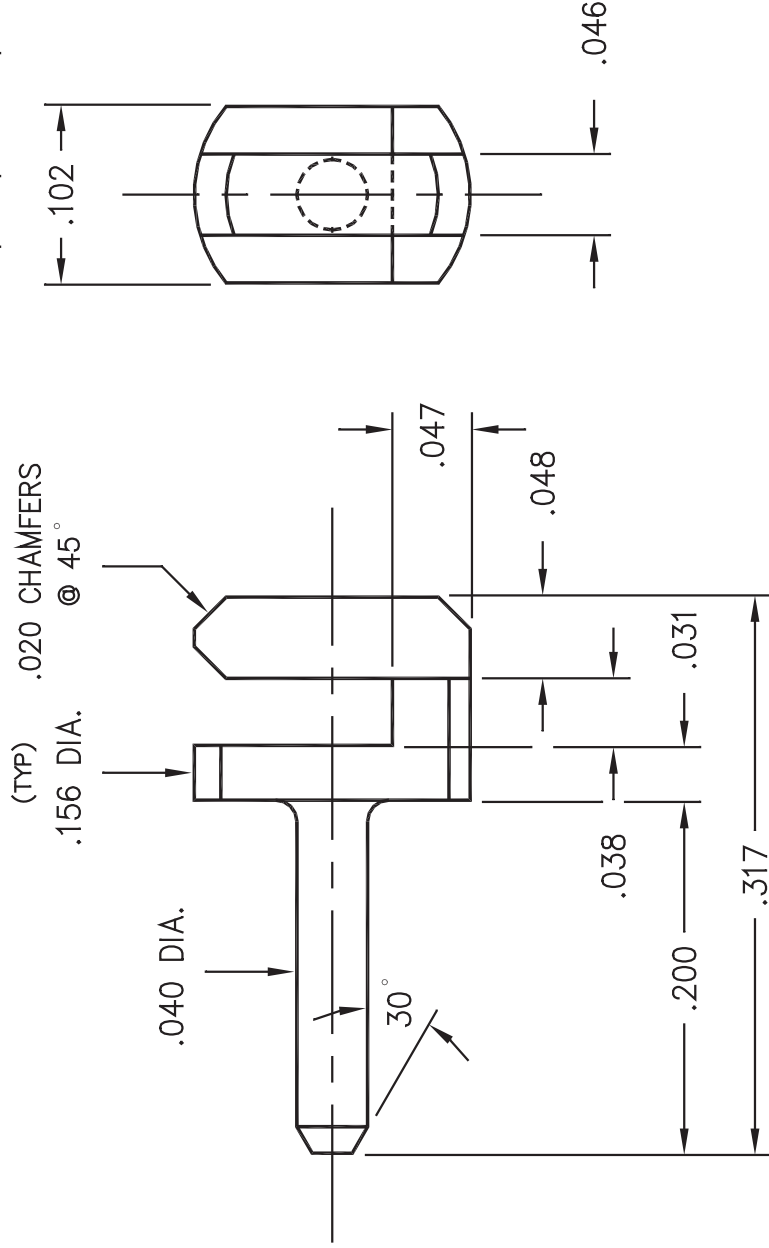
For more information, please visit [mill-max.com/PR511](http://mill-max.com/PR511).

(7/09 -- 511)

Mill-Max Mfg. Corp. • 190 Pine Hollow Road, Oyster Bay, NY 11771-0300  
516-922-6000 • Fax: 516-922-9253 • [www.mill-max.com](http://www.mill-max.com)



REV	DATE	DESCRIPTION



ORDER AS: #7310-0-01-21-00-00-08-0

NOTES:

- PIN MATERIAL: BRASS ALLOY 360, 1/2 HARD.
- PIN FINISH: 20 μ" GOLD OVER NICKEL.

SCALE 10:1	DATE	DRAWN D.M.	CHECKED	CUST. APPROVAL	DATE
TITLE SURFACE MOUNT PIN					
PROPOSAL FOR			PROPOSAL NUMBER	REV	REV