

# MAXIMUM SOLUTIONS

## Mill-Max Micro-Miniature Organic Fibre Plug® Receptacle



Mill-Max has added a micro-miniature option to our organic fibre plug® receptacle lineup. The newest Mill-Max socket receptacle, [4428-0-43-15-04-14-10-0](#), is our tiniest OFP® receptacle ever. Optimized for high-density packaging down to 1 mm pitch, this micro-miniature, ultra-low profile receptacle accepts .008"-.013" device leads or mating pins and can be soldered into a hole as small as .030."

Mill-Max's Organic Fibre Plug (OFP®) solder barrier receptacles are discrete sockets for through-hole soldering into printed circuit boards. These open bottom receptacles are fitted with Organic Fibre Plugs® to prevent contamination of the internal contact during the soldering process. When the device/mating lead is plugged into the receptacle, the OFP® is knocked out, allowing the mating lead to pass through the fingers of the internal contact and make a reliable electrical connection. Like all Mill-Max OFP® receptacles, the 4428 features an open bottom construction designed for pin pass-through requirements such as board-to-board or board to module interconnection.

The 4428 is also available packaged on tape & reel, part number [4428-0-67-15-04-14-10-0](#). Tape & reel packaging permits these through-hole components to be placed simultaneously with surface mount parts on pick-'n-place assembly lines – eliminating the need to hand place the receptacles in an additional manufacturing step.

Mill-Max 4428 features a gold plated, precision-machined brass shell assembled with our exclusive #04 gold plated beryllium copper contact clip with a 2 amp current rating.

For more information, please visit: [www.mill-max.com/PR630](http://www.mill-max.com/PR630).

# PIN RECEPTACLES

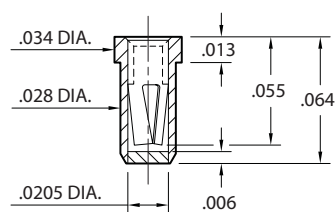
## PIN RECEPTACLES WITH ORGANIC FIBRE PLUG® SOLDER BARRIER (SEE SPECIFIC CONTACT RANGE ON PAGES 250, 251 & 253)

- These through-hole (tubular) receptacles are designed for hand, wave or reflow\* soldering. The ORGANIC FIBRE PLUG® barrier prevents solder paste or flux from contaminating the spring contact.
- After soldering, the OFP® barrier is pushed out of the receptacle when the device is plugged in.
- All parts are available as discrete receptacles or supplied on carrier tape per EIA-481 to feed industry standard pick and place machines.

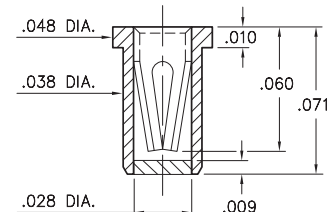
\*Intrusive reflow (also called "pin-in-paste") is a technique of using conventional through-hole components in a reflow soldering process. The receptacles are placed into plated through-holes in the circuit board (solder paste has previously been screen printed on pads adjacent to the holes) and the board is reflowed in the same pass as other SMT components. Solder will fill the plated through-holes and achieve solder joints as reliable as wave soldering. The OFP® barrier prevents solder paste from being picked-up inside the contact during pick 'n place assembly. "Overprinting" paste on the solder mask can be used to adjust the volume of paste required to fill each hole.



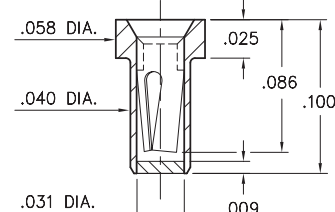
**4428**  
4428-0-XX-XX-04-XX-10-0  
Solder mount in  $\varnothing .032$ " max. PTH  
#04 Contact for  $\varnothing .008$ " -  $.013$ " pins  
Also available on 16mm wide carrier tape:  
3,400 parts per 13" reel



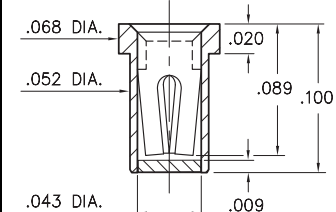
**5359**  
5359-0-XX-XX-10-XX-10-0  
Solder mount in  $\varnothing .043 \pm .003$ " PTH  
#10 Contact for  $\varnothing .012$ " -  $.017$ " pins  
Also available on 16mm wide carrier tape:  
3,000 parts per 13" reel



**0577**  
0577-0-XX-XX-21-XX-10-0  
Solder mount in  $\varnothing .045 \pm .003$ " PTH  
#21 Contact for  $\varnothing .015$ " -  $.022$ " pins  
Also available on 12mm wide carrier tape:  
3,000 parts per 13" reel



**4015**  
4015-0-XX-XX-30-XX-10-0  
Solder mount in  $\varnothing .057 \pm .003$ " PTH  
#30 Contact for  $\varnothing .015$ " -  $.025$ " pins  
Also available on 8mm wide carrier tape:  
5,500 parts per 13" reel



### SPECIFICATIONS:

**Shell Material:** Brass Alloy 360, 1/2 Hard  
**Contact Material:** Beryllium Copper Alloy 172, HT  
**Solder Barrier:** Organic Fibre Plug®  
**Dimensions: Inches**  
**Tolerances On:** Lengths:  $\pm .005$   
Diameters:  $\pm .002$   
Angles:  $\pm 2^\circ$



**ORDER CODE: XXXX - 0 - XX - XX - XX - XX - XX - 0**

**BASIC PART #**

**SPECIFY PACKAGING:**

- 43 Discrete Receptacles
- 67 Supplied on 13" Reels

**SPECIFY SHELL FINISH:**

- 01 200  $\mu$ " TIN/LEAD OVER NICKEL
- 80 200  $\mu$ " TIN OVER NICKEL (RoHS)

**CONTACT:**

#04, #10, #21 or #30 CONTACT (DATA ON PAGES 250, 251 & 253)

**SPECIFY CONTACT FINISH:**

- 27 30  $\mu$ " GOLD OVER NICKEL (RoHS)
- 02 100  $\mu$ " TIN/LEAD OVER NICKEL
- 84 200  $\mu$ " TIN OVER NICKEL (RoHS)

