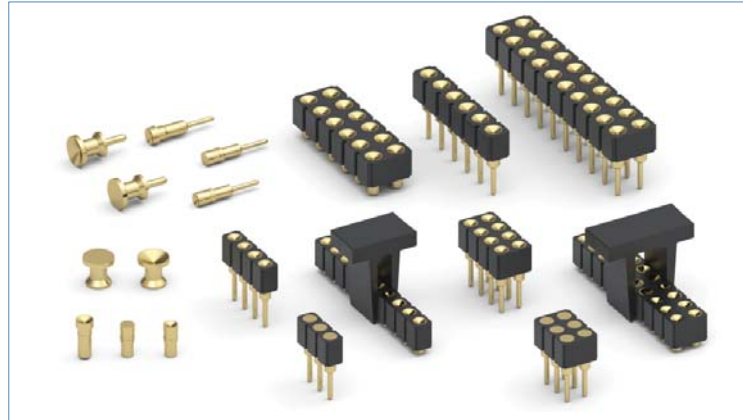


MAXIMUM SOLUTIONS

Expanded Line of Mill-Max Target Connectors



Mill-Max is excited to introduce a selection of new target connectors and pins. These components are used in place of SMT pads on a PCB as the mating surface for spring-loaded pins. The new series' are offered in .100" (2,54 mm) and 2 mm grid connectors as well as new discrete pins for a wide range of applications.

Combining target connectors with spring-loaded connectors on opposing boards can be a simple and convenient solution for making connections between stacked boards or docking stations and devices.

Our new line of 2 mm pitch target connectors are designed to mate with our recently released 836 and 838 series single and double row 2 mm pitch spring-loaded connectors. We are offering both through-hole and SMT terminations with the SMT products packaged on tape and reel. This product family includes choices for connectors with flat or concave face contact surfaces. Concave face targets provide additional surface area for mating and can aid in centering/alignment of components and/or boards fitted with spring-loaded connectors.

As a complement to our existing .100" (2,54 mm) grid through-hole and SMT target connectors, we are introducing three new series' featuring targets with concave faces: single and double row through-hole and double row SMT.

Rounding out the lineup of new target components are four discrete target pins well suited for mating with Mill-Max's larger spring-loaded pins such as the 0861-0 and 0871-0 which have .092" (2,34 mm) diameter plungers. There are two through-hole pins, one with a flat contact surface (1946-0) and one with a concave contact surface (1945-0). These pins are characterized by a large .125" (3,17 mm) diameter face, a .120" (3,05 mm) above board height and a .030" (.76 mm) diameter tail. The SMT pins have the flat contact surface (1944-0) and concave contact surface (1943-0) options along with the .125" (3,17) diameter face and .120" (3,05 mm) above board height. These SMT pins are available in bulk or packaged on tape and reel.

All the pins are precision-machined and gold-plated for environmental protection, durability and good conductivity. The connector insulators are molded from high temperature plastic suitable for most soldering process including RoHS environments. All of these products are RoHS compliant. See the attached catalog pages for further details.

Please visit www.mill-max.com/PR652 for more information.

(2/15 -- PR652)

Mill-Max Mfg. Corp. • 190 Pine Hollow Road, Oyster Bay, NY 11771
516-922-6000 • Fax: 516-922-9253 • www.mill-max.com



SPRING-LOADED CONNECTORS

SERIES 319, 419 • .100" GRID CONCAVE FACE TARGET CONNECTORS FOR SPRING-LOADED ASSEMBLIES • SINGLE AND DOUBLE ROW STRIPS

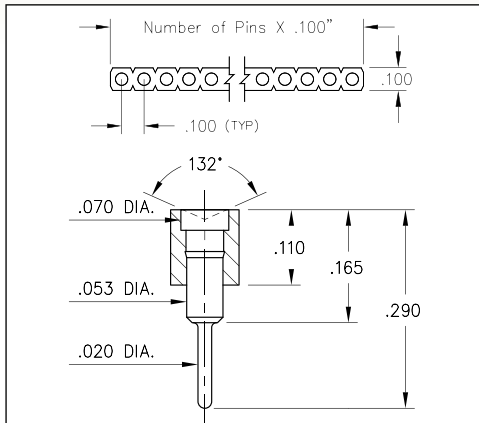


FIG. 1

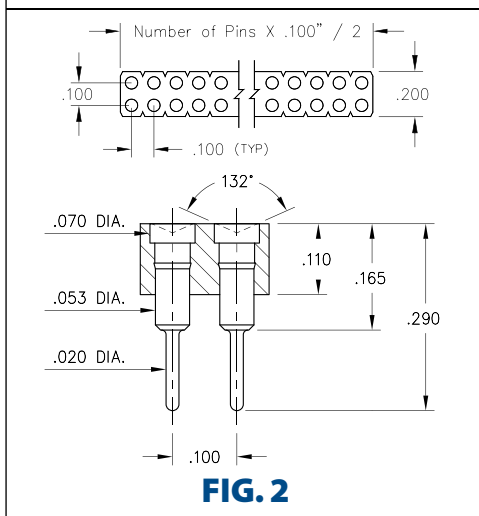


FIG. 2

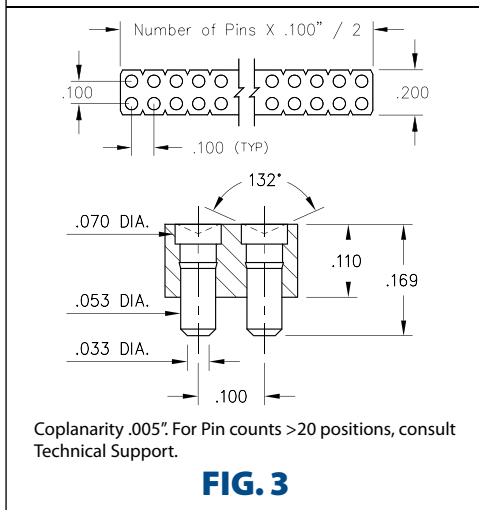
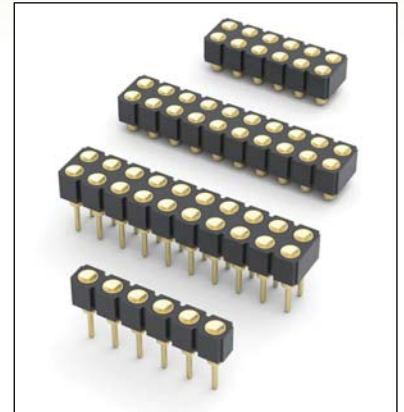


FIG. 3

- Series 319 and 419 Spring Target Connectors, supplied in single and double row strips
- These target connectors have a concave face providing greater surface area for mating with our standard .042" diameter plungers. Target connectors provide an excellent gold-plated conductive path back to the board-mounted spring pin connector
- Target connectors use MM #1947 and #1948 pins. See page 223.1 for details
- Insulators are high temperature thermoplastic



ORDERING INFORMATION

	Series 319...006	Standard Solder Tails
FIG. 1	319-10-1	-00-006000
	Specify number of pins	01-64
FIG. 2	Series 419...006	Standard Solder Tails
	419-10-2	-00-006000
	Specify number of pins	04-64
FIG. 3	Series 419...007	Surface Mount
	419-10-2	-30-007000
	Specify number of pins	04-64
<div style="display: flex; justify-content: space-around; align-items: center;"> <div style="border: 1px solid black; padding: 5px; background-color: #c8e6c9;">RoHS-2 2011/65/EU</div> <div style="border: 1px solid black; border-radius: 50%; padding: 5px;">XX=Plating Code See Below</div> <div style="border: 1px solid black; border-radius: 50%; padding: 5px;">For Electrical, Mechanical & Environmental Data, See page 264</div> </div>		
SPECIFY PLATING CODE XX=		
Pin Plating	10 ◆	10 μ" Au

SPRING-LOADED CONNECTORS

SERIES 830 • 2mm GRID FLAT & CONCAVE FACE TARGET CONNECTORS FOR SPRING-LOADED ASSEMBLIES • SINGLE ROW STRIPS

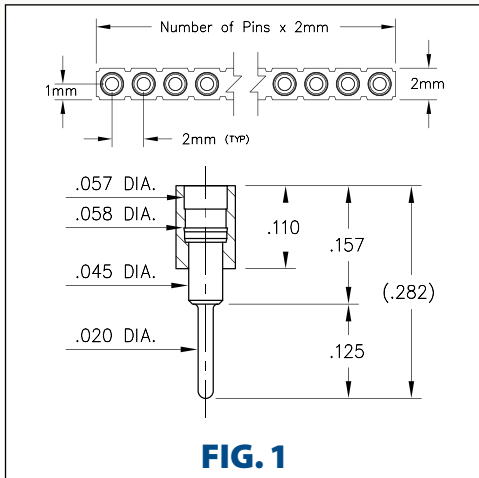


FIG. 1

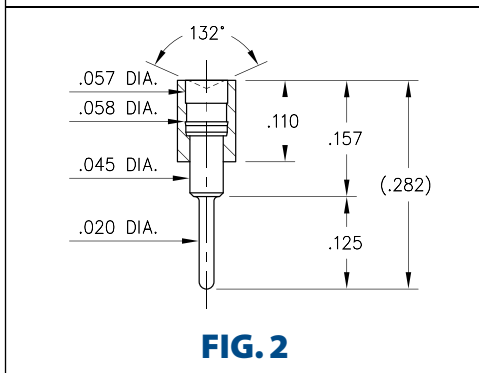


FIG. 2

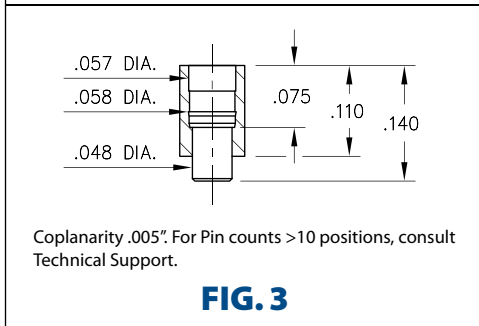


FIG. 3

Coplanarity .005". For Pin counts >10 positions, consult Technical Support.

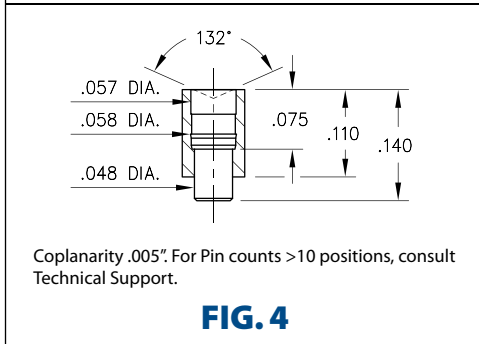
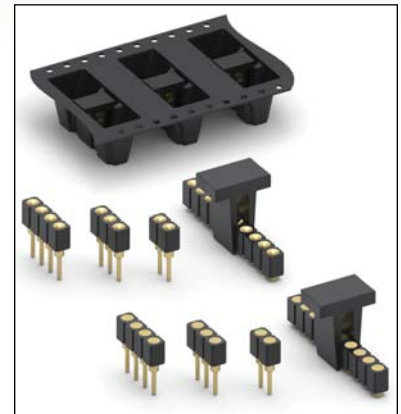




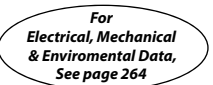

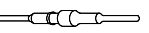
FIG. 4

Coplanarity .005". For Pin counts >10 positions, consult Technical Support.

- Series 830 2mm Spring Target Connectors, supplied in single row strips
- Target connectors provide an excellent gold-plated conductive path back to the board-mounted spring pin connector. Available in both through-hole and SMT terminations with the choice of either flat or concave face contact surfaces. Concave face targets provide additional surface area for mating with our standard .032" diameter plungers
- Target connectors use MM #1949, #1950, #1951, and #1952 pins. See page 223.1 for details
- Insulators are high temperature thermoplastic



ORDERING INFORMATION

FIG. 1	Series 830...003 Flat face / Solder Tails
	830-10-0__-10-003000 Specify number of pins 01-20
FIG. 2	Series 830...004 Concave face / Solder Tails
	830-10-0__-10-004000 Specify number of pins 01-20
FIG. 3	Series 830...30-003 Flat face / Surface Mount
	830-10-0__-30-003XXX Specify number or pins 02-10 Tube packaged = 000 Tape & reel packaged = 191 400 parts per 13" reel
FIG. 4	Series 830...30-004 Concave face / Surface Mount
	830-10-0__-30-004XXX Specify number or pins 02-10 Tube packaged = 000 Tape & reel packaged = 191 400 parts per 13" reel
  	
SPECIFY PLATING CODE XX=	10 
Pin Plating 	10 μ" Au

SPRING-LOADED CONNECTORS

SERIES 832 • 2mm GRID FLAT & CONCAVE TARGET CONNECTORS FOR SPRING-LOADED ASSEMBLIES • DOUBLE ROW STRIPS

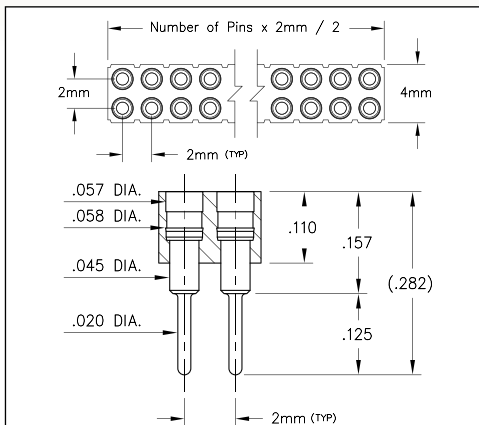


FIG. 1

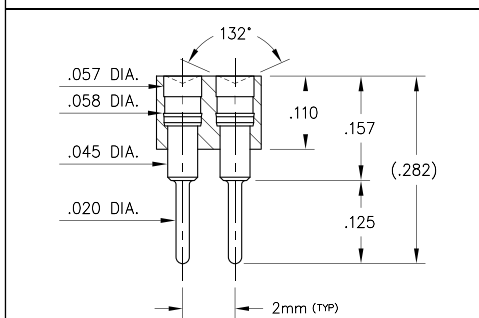
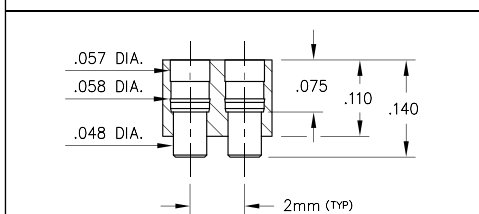
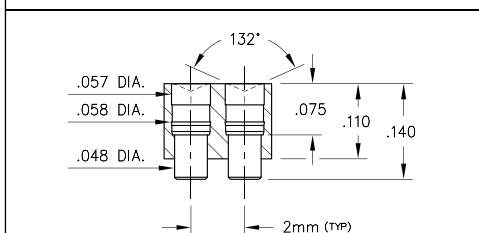


FIG. 2



Coplanarity .005". For Pin counts >20 positions, consult Technical Support.

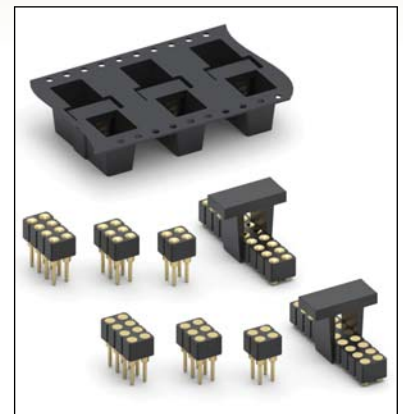
FIG. 3



Coplanarity .005". For Pin counts >20 positions, consult Technical Support.

FIG. 4

- Series 832 2mm Spring Target Connectors, supplied in double row strips
- Target connectors provide an excellent gold-plated conductive path back to the board-mounted spring pin connector. Available in both through-hole and SMT terminations with the choice of either flat or concave face contact surfaces. Concave face targets provide additional surface area for mating with our standard .032" diameter plungers
- Target connectors use MM #1949, #1950, #1951, and #1952 pins. See page 223.1 for details
- Insulators are high temperature thermoplastic



ORDERING INFORMATION

FIG. 1	Series 832...003 Flat face / Solder Tails
	832-10-0__-10-003000 Specify number of pins \uparrow 04-20
FIG. 2	Series 832...004 Concave face / Solder Tails
	832-10-0__-10-004000 Specify number of pins \uparrow 04-20
FIG. 3	Series 832...30-003 Flat face / Surface Mount
	832-10-0__-30-003XXX Specify number or pins \uparrow 04-20 Tube packaged = 000 Tape & reel packaged = 191 400 parts per 13" reel
FIG. 4	Series 832...30-004 Concave face / Surface Mount
	832-10-0__-30-004XXX Specify number or pins \uparrow 04-20 Tube packaged = 000 Tape & reel packaged = 191 400 parts per 13" reel
<div style="display: flex; justify-content: space-around; align-items: center;"> <div style="border: 1px solid black; padding: 5px; background-color: #90EE90;">RoHS - 2 2011/65/EU</div> <div style="border: 1px solid black; border-radius: 50%; padding: 5px;">XX=Plating Code See Below</div> <div style="border: 1px solid black; border-radius: 50%; padding: 5px;">For Electrical, Mechanical & Environmental Data, See page 264</div> </div>	
SPECIFY PLATING CODE XX=	10 \blacklozenge
Pin Plating	10 μ " Au



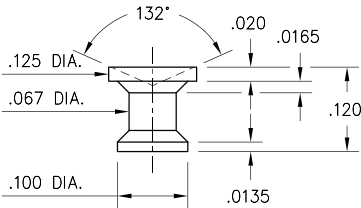
MALE PCB PINS

PRINTED CIRCUIT PINS

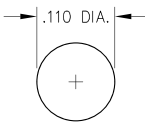
1943

1943-0-00-15-00-00-03-0

Target contact, surface mount with Concave face
Also available on 16mm wide carrier tape:
2,200 parts per 13" reel.
Order as: 1943-0-57-15-00-00-03-0



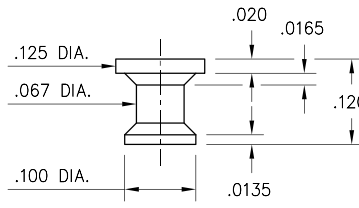
P.C.B. Layout



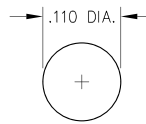
1944

1944-0-00-15-00-00-03-0

Target contact, surface mount
Also available on 16mm wide carrier tape:
2,200 parts per 13" reel.
Order as: 1944-0-57-15-00-00-03-0



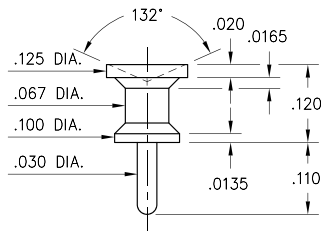
P.C.B. Layout



1945

1945-0-00-15-00-00-03-0

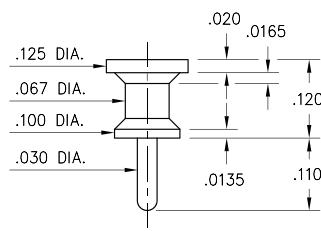
Target contact, Solder Tail
Concave face for increased surface contact



1946

1946-0-00-15-00-00-03-0

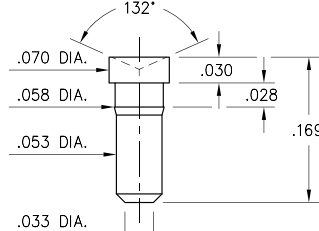
Target contact, Solder Tail



1947

1947-0-00-15-00-00-03-0

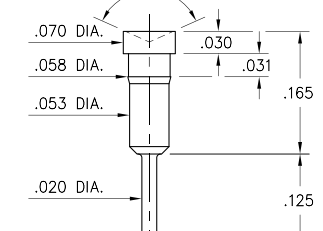
Target contact, surface mount
Concave face for increased surface contact



1948

1948-0-00-15-00-00-03-0

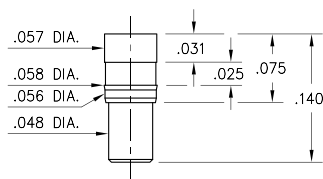
Target contact, Solder Tail
Concave face for increased surface contact



1949

1949-0-00-15-00-00-03-0

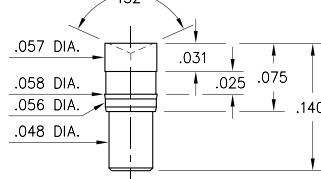
Target contact, surface mount



1950

1950-0-00-15-00-00-03-0

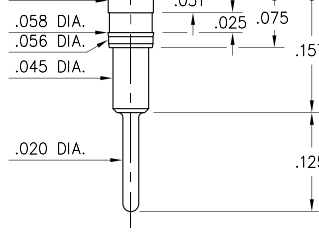
Target contact, surface mount
Concave face for increased surface contact



1951

1951-0-00-15-00-00-03-0

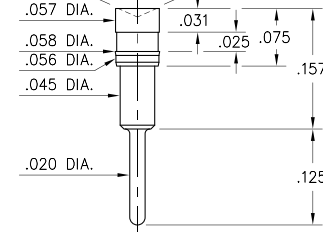
Target contact, Solder Tail



1952

1952-0-00-15-00-00-03-0

Target contact, Solder Tail
Concave face for increased surface contact



SPECIFICATIONS:

Pin Material: Brass Alloy 360, 1/2 Hard
(Except where noted)

Dimensions: Inches

Tolerances On: Lengths: ±.005
Diameters: ±.002
Angles: ±2°



ORDER CODE: 194X - 0 - 00 - 15 - 00 - 00 - 03 - 0

BASIC PART #

SPECIFY PIN FINISH:

◆ 15 10 μ" GOLD OVER NICKEL (RoHS)

