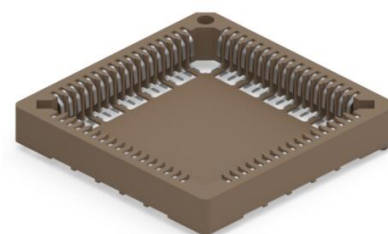
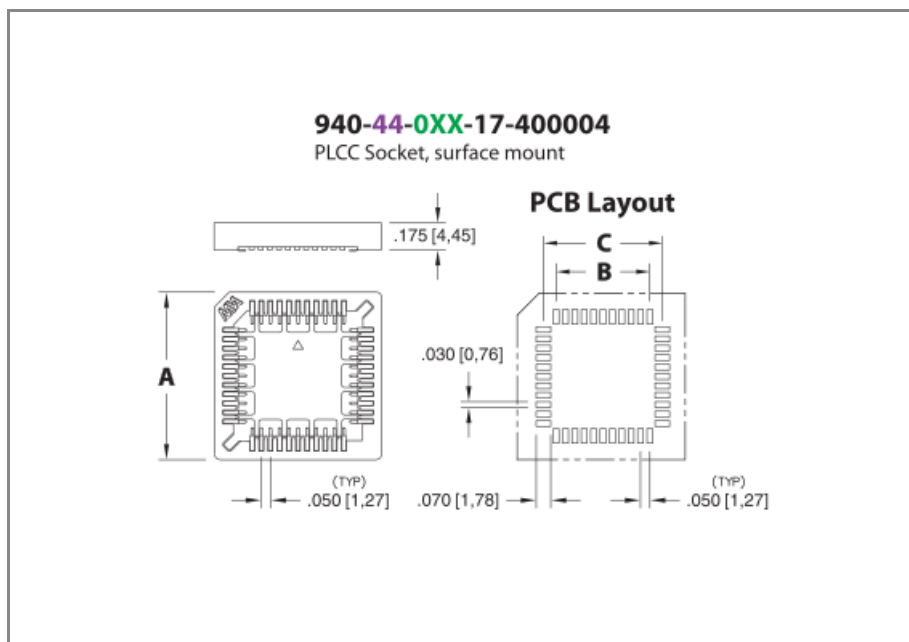




PRODUCT NUMBER: 940-44-068-17-400004

www.mill-max.com  
DATA SHEET



| General Information          |                           |
|------------------------------|---------------------------|
| 1 Product Lifecycle:         | Active                    |
| Product Family:              | IC Socket                 |
| Type:                        | Surface Mount PLCC Socket |
| Description:                 | Standard                  |
| Pitch:                       | .050" (1,270mm)           |
| Number of Pins:              | 68                        |
| Head Type:                   | N/A                       |
| Tail Type:                   | N/A                       |
| Operating Temperature Range: | -55/+105° C               |
| Country of Origin:           | ROC                       |
| 2 ROHS:                      | Yes                       |

**940-44-068-17-400004 - SPECIFICATIONS**

| Product Attributes  |                           |
|---------------------|---------------------------|
| 3 Plating Code:     | 44 - Contacts: 150 μ" Tin |
| Insulator Material: | PPS                       |
| Rows:               | N/A                       |
| Frame Type:         | N/A                       |
| Contact Number:     | N/A                       |
| Mounting Tab:       | N/A                       |

| Key Dimensions      |                   |
|---------------------|-------------------|
| Above Board Height: | .175" (4,445mm)   |
| Head Diameter:      | N/A               |
| Insulator Height:   | .175" (4,445mm)   |
| Tail Diameter:      | N/A               |
| Tail Length:        | N/A               |
| A Dim:              | 1.213" (30,810mm) |
| B Dim:              | .800" (20,320mm)  |
| C Dim:              | .934" (23,724mm)  |

| Electrical Specifications        |                |
|----------------------------------|----------------|
| 4 Current Rating:                | 1 Amp          |
| Insulation Resistance:           | 10,000 MΩ min. |
| Rated Voltage:                   | N/A            |
| Dielectric Withstanding Voltage: | 600 VAC        |

| Mechanical Specifications     |   |
|-------------------------------|---|
| Mechanical life (Durability): | 25 Cycles Minimum                               |
| 5 Vibration:                  | No Elect. Discontinuity > 1μs @ 10-2000HZ, 15 G |

| Mounting Specifications |   |
|-------------------------|---|
| Mounting Type:          | Surface Mount                                     |
| Mounting Hole:          | N/A   |
| Mounting Tab:           | N/A   |
| SMT Pad Size:           | Rectangular - 0.070" X 0.030" (1,778mm X 0,762mm) |

| Packaging Information |             |
|-----------------------|-------------|
| 6 Packaging:          | Tape & Reel |
| Tape Width:           | N/A         |
| Quantity Per Reel:    | 220         |

| Environmental & Export Classifications |                  |
|--|------------------|
| REACH Status:                          | REACH Unaffected |
| ECCN:                                  | Contact Factory  |
| HTSUS:                                 | 8536.90.4040     |
| Cage Code:                             | 3N087            |
| Moisture Sensitivity Level (MSL):      | 1 (Unlimited)    |
| Special Handling Code:                 | UNDF             |
| Prop 65:                               | N                |
| Static Sensitive:                      | N                |

## NOTES:

1. Part is Active and in Production, No Scheduled Obsolescence
2. Mill-Max products labeled with the RoHS symbol are compliant with all three ROHS Directives. All of our products previously described as RoHS (2002/95/EC) and RoHS-2 (2011/65/EC) are also compliant with RoHS-3 (2015/863/EU).
3. **Contact Plating:** 150  $\mu$ " Tin
4. Per IEC 60512-5-1, Current Carrying Capacity (evaluated at 10° C Temp. Rise)
5. For discrete pin only. Per IEC 60512-6-4: Test 6d: Vibration (sinusoidal)
6. 13" (330 mm) Reel

## ADDITIONAL PARTS, PACKAGING & ASSEMBLY INFO

- Note: Not end stackable
- Accepts JEDEC PLCCs MO-047 and MO-052
- Low profile for high density PC board stacking
- Standoffs provide clearance for heat dissipation and cleaning
- Contacts are plated with 150  $\mu$ " tin
- Insulator material is glass reinforced PPS

## ADDITIONAL NOTES AND SPECIFICATIONS

In the interest of improved design, quality and performance , Mill-Max reserves the right to make changes in its specifications without prior notice. Specifications and tolerances are provided wherever possible. The tolerance on dimensions of critical to function features is typically held tighter than the stated standard tolerances, such as press-fits, holes and lengths affecting the coplanarity of SMT products. Due to the wide variety of interconnects Mill-Max offers, the specific tolerances vary from product to product. If you need information regarding the tolerance of a particular part, please contact Technical Services.

## RELATED LINKS AND DOCUMENTS

- Product Detail: [940-44-068-17-400004 - Standard](#)
- [PRODUCT DISCONTINUATION NOTICE \(940-44-032-17-400004\)](#)
- Environmental Compliance: <https://www.mill-max.com/rohs>