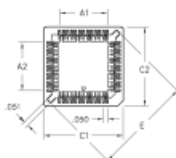




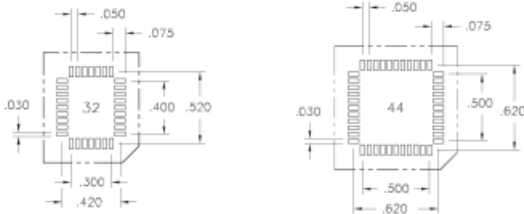
PRODUCT NUMBER: 540-44-032-17-400000

www.mill-max.com
DATA SHEET

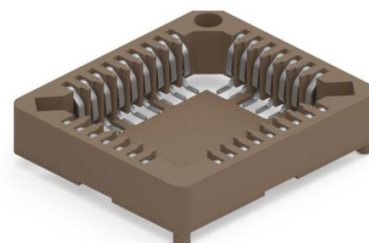


540-44-0XX-17-400000
Surface Mount PLCC Socket

PCB Layout



3D models of this series are unavailable



General Information	
1 Product Lifecycle:	Active
Product Family:	IC Socket
Type:	Surface Mount PLCC Socket
Description:	Compact
Pitch:	.050" (1,270mm)
Number of Pins:	32
Head Type:	N/A
Tail Type:	N/A
2 Operating Temperature Range:	-55/+125° C
Country of Origin:	ROC
3 ROHS:	Yes

540-44-032-17-400000 - SPECIFICATIONS

Product Attributes	
4 Plating Code:	44 - Contacts: 150 μ " Tin
Insulator Material:	PPS
Rows:	N/A
Frame Type:	N/A
Contact Number:	N/A
Mounting Tab:	N/A

Key Dimensions	
Above Board Height:	.148" (3,759mm)
Head Diameter:	N/A
Insulator Height:	.148" (3,759mm)
Tail Diameter:	N/A
Tail Length:	N/A
A Dim:	.300" (7,620mm)
C Dim:	.670" (17,018mm)
E Dim:	.885" (22,479mm)
H Dim:	.148" (3,759mm)

Electrical Specifications	
5 Current Rating:	1 Amp
Insulation Resistance:	5,000 M Ω min.
Rated Voltage:	N/A
Dielectric Withstanding Voltage:	600 VRMS

Mechanical Specifications	
Mechanical life (Durability):	50 Cycles Minimum
6 Vibration:	No Elect. Discontinuity > 1 μ s @ 10-2000HZ, 15 G

Mounting Specifications

Mounting Type:	Surface Mount
Mounting Hole:	N/A
Mounting Tab:	N/A
SMT Pad Size:	Rectangular - 0.075" X 0.030" (1,905mm X 0,762mm)

Packaging Information

Packaging:	Tube
Tape Width:	N/A
Quantity Per Tube:	26

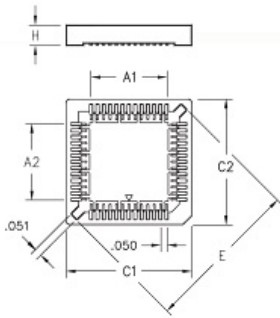
Environmental & Export Classifications

REACH Status:	REACH Unaffected
ECCN:	Contact Factory
HTSUS:	8536.90.4040
Cage Code:	3N087
Moisture Sensitivity Level (MSL):	1 (Unlimited)
Special Handling Code:	UNDF
Prop 65:	N
Static Sensitive:	N

NOTES:

1. Part is Active and in Production, No Scheduled Obsolescence
2. Per IEC 60512-11-(4,-9,-10,-12)
3. Mill-Max products labeled with the RoHS symbol are compliant with all three ROHS Directives. All of our products previously described as RoHS (2002/95/EC) and RoHS-2 (2011/65/EC) are also compliant with RoHS-3 (2015/863/EU).
4. **Contact Plating:** 150 μ " Tin
5. Per IEC 60512-5-1, Current Carrying Capacity (evaluated at 10° C Temp. Rise)
6. For discrete pin only. Per IEC 60512-6-4: Test 6d: Vibration (sinusoidal)

ADDITIONAL PARTS, PACKAGING & ASSEMBLY INFO



- Note: Not end stackable
- Designed for JEDEC type devices
- Open frame design in solder area improves results of IR soldering and facilitates visual inspection of solder pads
- Contacts are plated with 150 μ tin
- The insulator is molded PPS (Ryton R-4)

ADDITIONAL NOTES AND SPECIFICATIONS

In the interest of improved design, quality and performance, Mill-Max reserves the right to make changes in its specifications without prior notice. Specifications and tolerances are provided wherever possible. The tolerance on dimensions of critical to function features is typically held tighter than the stated standard tolerances, such as press-fits, holes and lengths affecting the coplanarity of SMT products. Due to the wide variety of interconnects Mill-Max offers, the specific tolerances vary from product to product. If you need information regarding the tolerance of a particular part, please contact Technical Services.

RELATED LINKS AND DOCUMENTS

- Product Detail: [540-44-032-17-400000 - Compact](#)
- [PRODUCT DISCONTINUATION NOTICE \(540-44-020-17-40000X\)](#)
- Environmental Compliance: <https://www.mill-max.com/rohs>