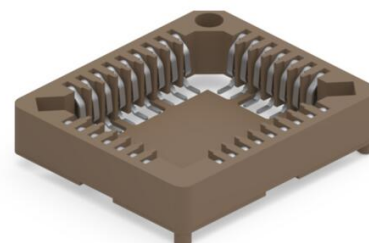
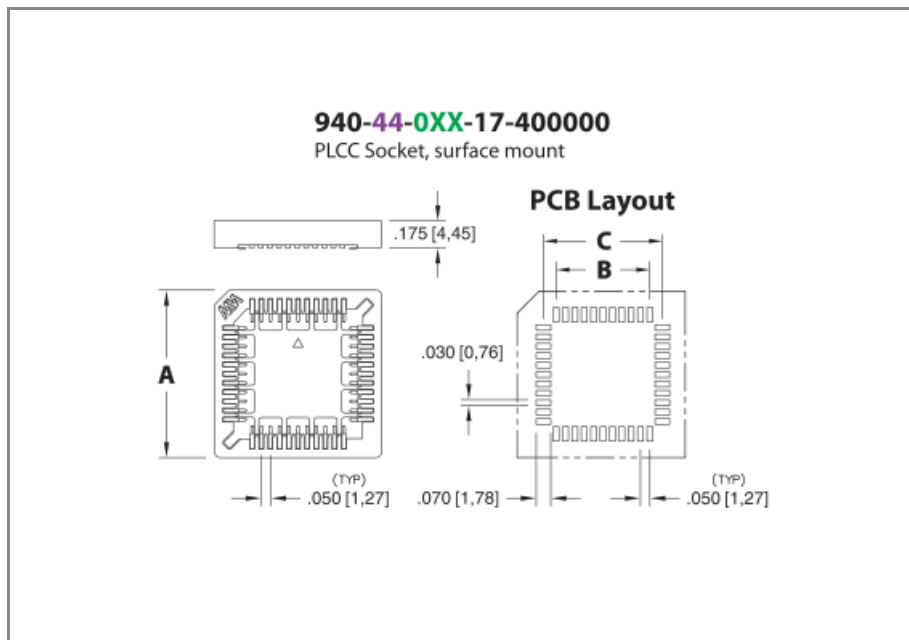




PRODUCT NUMBER: 940-44-032-17-400000

www.mill-max.com  
DATA SHEET



General Information	
1 Product Lifecycle:	Active
Product Family:	IC Socket
Type:	Surface Mount PLCC Socket
Description:	Standard
Pitch:	.050" (1,270mm)
Number of Pins:	32
Head Type:	N/A
Tail Type:	N/A
Operating Temperature Range:	-55/+105° C
Country of Origin:	ROC
2 ROHS:	Yes

## 940-44-032-17-400000 - SPECIFICATIONS

Product Attributes	
3 Plating Code:	44 - Contacts: 150 μ" Tin
Insulator Material:	PPS
Rows:	N/A
Frame Type:	N/A
Contact Number:	N/A
Mounting Tab:	N/A

Key Dimensions	
Above Board Height:	.175" (4,445mm)
Head Diameter:	N/A
Insulator Height:	.175" (4,445mm)
Tail Diameter:	N/A
Tail Length:	N/A
A Dim:	.813"-.713" (20,650-18,110mm)
B Dim:	.400"-.300" (10,160-7,620mm)
C Dim:	.534"-.434" (13,564-11,024mm)

Electrical Specifications	
4 Current Rating:	1 Amp
Insulation Resistance:	10,000 MΩ min.
Rated Voltage:	N/A
Dielectric Withstanding Voltage:	600 VAC

Mechanical Specifications	
Mechanical life (Durability):	25 Cycles Minimum
5 Vibration:	No Elect. Discontinuity > 1μs @ 10-2000HZ, 15 G

Mounting Specifications	
Mounting Type:	Surface Mount
Mounting Hole:	N/A
Mounting Tab:	N/A
SMT Pad Size:	Rectangular - 0.070" X 0.030" (1,778mm X 0,762mm)

Packaging Information	
Packaging:	Tube
Tape Width:	N/A
Quantity Per Tube:	24

Environmental & Export Classifications	
REACH Status:	REACH Unaffected
ECCN:	Contact Factory
HTSUS:	8536.90.4040
Cage Code:	3N087
Moisture Sensitivity Level (MSL):	1 (Unlimited)
Special Handling Code:	UNDF
Prop 65:	N
Static Sensitive:	N

## NOTES:

1. Part is Active and in Production, No Scheduled Obsolescence
2. Mill-Max products labeled with the RoHS symbol are compliant with all three ROHS Directives. All of our products previously described as RoHS (2002/95/EC) and RoHS-2 (2011/65/EC) are also compliant with RoHS-3 (2015/863/EU).
3. **Contact Plating:** 150  $\mu$ " Tin
4. Per IEC 60512-5-1, Current Carrying Capacity (evaluated at 10° C Temp. Rise)
5. For discrete pin only. Per IEC 60512-6-4: Test 6d: Vibration (sinusoidal)

## ADDITIONAL PARTS, PACKAGING & ASSEMBLY INFO

- Note: Not end stackable
- Accepts JEDEC PLCCs MO-047 and MO-052
- Low profile for high density PC board stacking
- Standoffs provide clearance for heat dissipation and cleaning
- Contacts are plated with 150  $\mu$ " tin
- Insulator material is glass reinforced PPS

## ADDITIONAL NOTES AND SPECIFICATIONS

In the interest of improved design, quality and performance , Mill-Max reserves the right to make changes in its specifications without prior notice. Specifications and tolerances are provided wherever possible. The tolerance on dimensions of critical to function features is typically held tighter than the stated standard tolerances, such as press-fits, holes and lengths affecting the coplanarity of SMT products. Due to the wide variety of interconnects Mill-Max offers, the specific tolerances vary from product to product. If you need information regarding the tolerance of a particular part, please contact Technical Services.

## RELATED LINKS AND DOCUMENTS

- Product Detail: [940-44-032-17-400000 - Standard](#)
- Environmental Compliance: <https://www.mill-max.com/rohs>