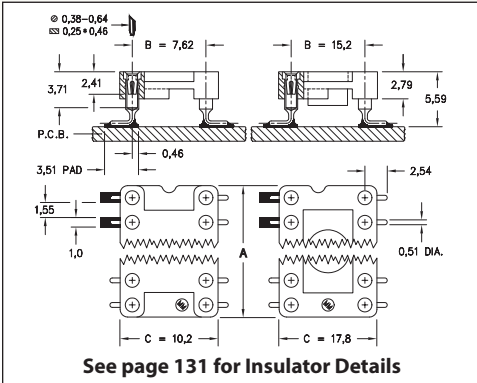
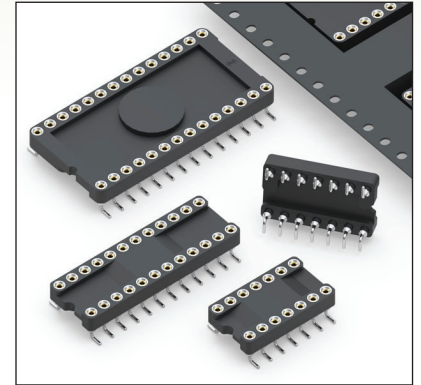


DUAL-IN-LINE SOCKETS

SERIES 210...105 • SMT, AUTO PLACEMENT, GULL WING • CLOSED FRAME



- Closed frame insulator is vision system compatible
- Gull wing terminals provide maximum strength and permit easy visual inspection of solder joints. Series 210 uses Mill-Max #1005 pins. See page 166 for details
- Available packaged in tubes or on tape & reel per EIA-481
- Hi-Rel, 4-finger BeCu #30 contact is rated at 3 amps. See page 253 for details
- High-temp Nylon 46 insulator is suitable for all forms of reflow soldering
- For Electrical, Mechanical and Environmental Data, see page 264 for details



Total number of pins				Quantity per tube	ORDERING INFORMATION					
	A	B	C		Tube Packaging	Tape & Reel Packaging	Tape Width (mm)	QTY per Reel		
VACUUM PAD TOP SURFACE ONLY										
6	7,6	7,62	10,1	67	210-XX-306-41-105000	210-XX-306-41-105799	16	400		
8	10,1	7,62	10,1	50	210-XX-308-41-105000	210-XX-308-41-105799	24	400		
14	17,7	7,62	10,1	28	210-XX-314-41-105000	210-XX-314-41-105799	32	400		
16	20,3	7,62	10,1	25	210-XX-316-41-105000	210-XX-316-41-105799	32	400		
18	22,8	7,62	10,1	22	210-XX-318-41-105000	210-XX-318-41-105799	44	400		
20	25,3	7,62	10,1	20	210-XX-320-41-105000	210-XX-320-41-105799	44	400		
24	30,4	7,62	10,1	16	210-XX-324-41-105000	210-XX-324-41-105799	44	400		
VACUUM PAD TOP AND BOTTOM										
24	30,4	15,24	17,7	16	210-XX-624-41-105000	210-XX-624-41-105799	44	300		
28	35,5	15,24	17,7	14	210-XX-628-41-105000	210-XX-628-41-105799	56	300		
32	40,6	15,24	17,7	12	210-XX-632-41-105000	210-XX-632-41-105799	56	300		
40	50,8	15,24	17,7	10	210-XX-640-41-105000	NOT AVAILABLE				
 XX=Plating Code See Below										
See page 264 for coplanarity information					SPECIFY PLATING CODE XX=					
					Sleeve (Pin)		93		43	
					Contact (Clip)		5,08µm Sn/Pb		5,08µm Sn	
						0,76µm Au		0,76µm Au		

