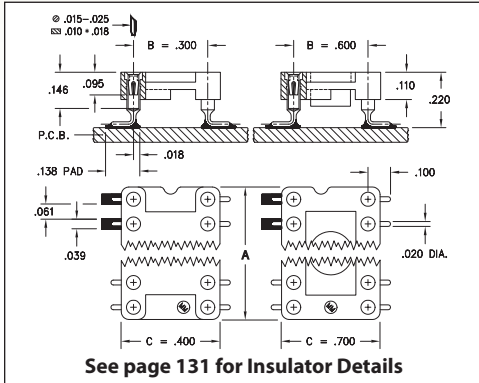
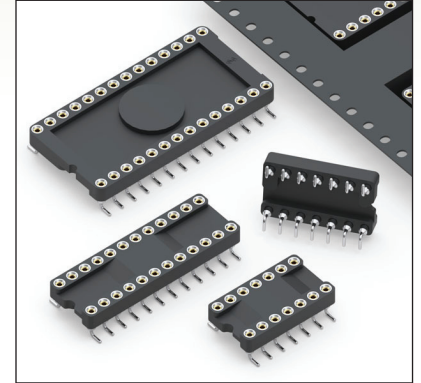


DUAL-IN-LINE SOCKETS

SERIES 210...105 • SMT, AUTO PLACEMENT, GULL WING • CLOSED FRAME



- Closed frame insulator is vision system compatible
- Gull wing terminals provide maximum strength and permit easy visual inspection of solder joints. Series 210 uses Mill-Max #1005 pins. See page 166 for details
- Available packaged in tubes or on tape & reel per EIA-481
- Hi-Rel, 4-finger BeCu #30 contact is rated at 3 amps. See page 253 for details
- High-temp Nylon 46 insulator is suitable for all forms of reflow soldering
- For Electrical, Mechanical and Environmental Data, see page 264 for details



Total number of pins				Quantity per tube	ORDERING INFORMATION					
	A	B	C		Tube Packaging	Tape & Reel Packaging	Tape Width (mm)	QTY per Reel		
VACUUM PAD TOP SURFACE ONLY										
6	0.3	0.3	0.4	67	210-XX-306-41-105000	210-XX-306-41-105799	16	400		
8	0.4	0.3	0.4	50	210-XX-308-41-105000	210-XX-308-41-105799	24	400		
14	0.7	0.3	0.4	28	210-XX-314-41-105000	210-XX-314-41-105799	32	400		
16	0.8	0.3	0.4	25	210-XX-316-41-105000	210-XX-316-41-105799	32	400		
18	0.9	0.3	0.4	22	210-XX-318-41-105000	210-XX-318-41-105799	44	400		
20	1.0	0.3	0.4	20	210-XX-320-41-105000	210-XX-320-41-105799	44	400		
24	1.2	0.3	0.4	16	210-XX-324-41-105000	210-XX-324-41-105799	44	400		
VACUUM PAD TOP AND BOTTOM										
24	1.2	0.6	0.7	16	210-XX-624-41-105000	210-XX-624-41-105799	44	300		
28	1.4	0.6	0.7	14	210-XX-628-41-105000	210-XX-628-41-105799	56	300		
32	1.6	0.6	0.7	12	210-XX-632-41-105000	210-XX-632-41-105799	56	300		
40	2.0	0.6	0.7	10	210-XX-640-41-105000	NOT AVAILABLE				
See page 264 for coplanarity information					SPECIFY PLATING CODE XX=					
					Sleeve (Pin)			93		43
					Contact (Clip)			200 μ" Sn/Pb		200 μ" Sn
								30 μ" Au		30 μ" Au

